



## **PUBLIC HEARING – RECREATION, PARKS & CULTURAL AFFAIRS AGENDA**

**JULY 9, 2025, 7:00 PM  
BY ZOOM VIRTUAL MEETING**

To allow public access, anyone may access a meeting by telephone and/or Zoom, or a recording in the City of Norwalk YouTube channel. Specific instructions and links can be found at [norwalkct.gov/meetings](https://norwalkct.gov/meetings).



Members of the public may call in to participate. Callers will not be able to see the meeting participants. All participants will be muted upon entering the meeting. To speak, dial \*9 on the phone and you will be called on by the host of the meeting during the public comment section. All speakers must state their name and address. Comments must be on a topic on the agenda, and are limited to three minutes. Anyone disrupting the orderly conduct of the meeting, including by using threatening, hateful, or sexually-explicit language, will be removed. Please find the information using the link above.



Members of the public who wish to provide "live comments" may also use the Zoom meeting platform. All participants will be muted upon entering the meeting. To speak, click the "raise your hand indicator" and you will be called by the host of the meeting during the public comment section. All speakers must state their name and address. Comments must be on a topic on the agenda, and are limited to three minutes. Anyone disrupting the orderly conduct of the meeting, including by using threatening, hateful, or sexually-explicit language, will be removed. Please find the information using the link above.



Members of the public who wish to provide public comment are encouraged to submit those via email in advance of the meeting. For these comments to be included into the record, they must be submitted by 12:00 p.m. the day of the meeting. Please email Dilene Byrd at [dbyrd@norwalkct.gov](mailto:dbyrd@norwalkct.gov) with the subject line "Public Comment" to provide written public comment prior to the meeting.

**I. CALL TO ORDER**

**II. ROLL CALL**

**III. PUBLIC PARTICIPATION**

**IV. DISCUSSION**

- A. The City of Norwalk and the Department of Recreation and Parks invites the general public to hear on the proposed grant of 3,360± sq. ft. gas utility easement by the City of Norwalk in favor of Eversource Energy for the purpose of constructing operating, maintaining, repairing and replacing a regulator facility station and related appurtenance on south-east side of land owned by the City of Norwalk at Strawberry Hill Avenue (Tax Assessor Map Block and Lot # 05/3A/04/00) near where it abuts William Street.**
- B. The City of Norwalk Recreation and Parks department invites the general public to hear the proposed grant of 100± sq. ft. gas utility easement by the City of Norwalk in**

**favor of Eversource Energy for the purpose of constructing operating, maintaining, repairing and replacing a regulator facility station and related appurtenance on west side of land owned by the City of Norwalk at 15 Calf Pasture Beach Road #3, Norwalk, CT (Tax Assessor Map Block and Lot 03/76/01/03) near where it abuts Calf Pasture Beach Road.**

**V. ADJOURNMENT**



**Map Notes**

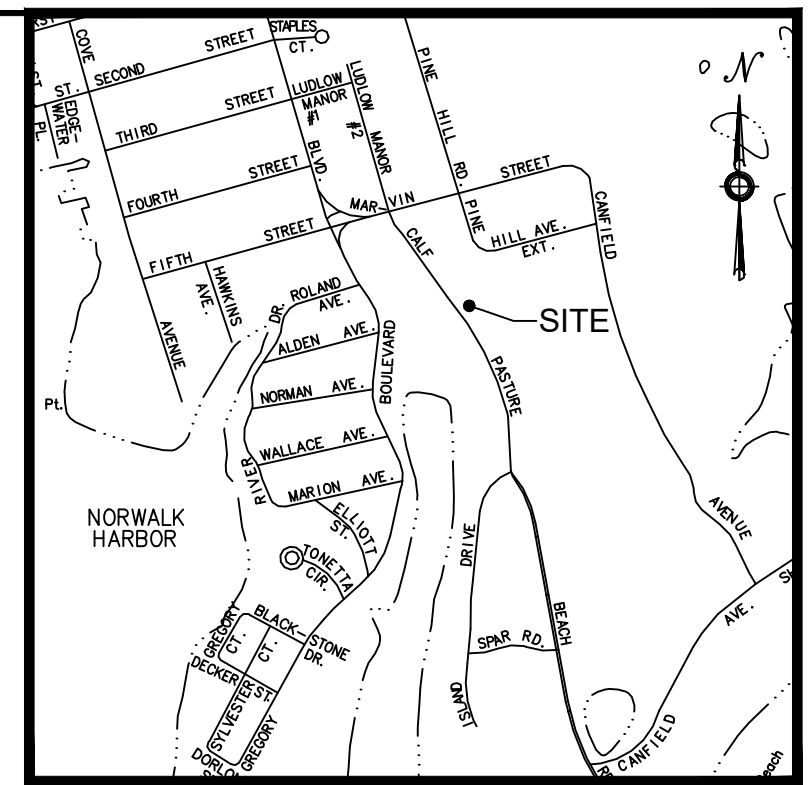
- This map and survey have been prepared in accordance with the Regulations of Connecticut State Agencies, Sections 20-300b-1 through 20-300b-20, "Minimum Standards of Accuracy, Content and Certification for Surveys and Maps" in the State of Connecticut, effective June 21, 1996, amended October 26, 2018.  
  
The type of survey performed and the mapped features depicted hereon are in accordance with the requirements of a Limited Property/Boundary Survey-Easement Map and is intended to depict the limits of the proposed easement in favor of Yankee Gas Services Company d/b/a Eversource Energy with respect to Property Lines and current existing improvements.  
  
Boundary determination/opinion is based upon a resurvey of the maps referenced in note 3.  
  
This survey conforms to Horizontal Accuracy Class A-2.  
  
Field survey was completed on March 13, 2025.
- North arrow and bearings are referenced to North American Datum (NAD83) projected onto the Connecticut State Plane Coordinate System based on GPS observations made on March 12, 2025 utilizing the Keystone KeyNetGPS VRS Network.

- Reference is made to the following maps:
  - A map depicting a Boundary and Topographic survey Filed in the City of Norwalk Engineering Department as NW Centerline Maps 17 546 Calf Pasture Beach Rd 3045, scale 1"=40';
  - Marvin Elementary School Expansion, Calf Pasture Beach Road, Norwalk, Existing Conditions Plan, SP-1, Scale 1"=40', Prepared By Wiles and Associates, Dated March 14, 1996; Depicting Map Showing Topographic Survey Prepared for Marvin Elementary School, Norwalk, Connecticut, Dated March 5, 1996, Prepared By The Huntington Company
- Parcel is identified on City of Norwalk Tax Assessor's Mapping as Tax Map 3 / Block 76 / Lot 1.
- A portion of the subject property lies within an "AE & X Zone" as depicted on Flood Insurance Rate Map (FIRM) Fairfield County, CT.(All Jurisdictions) Panel 532 & 534 of 626 Community of City of Norwalk, Number 090012 Panel 532 & 534, Suffix G, Map No. 09001C0532G & 09001C0534G with an effective date of July 8, 2013.

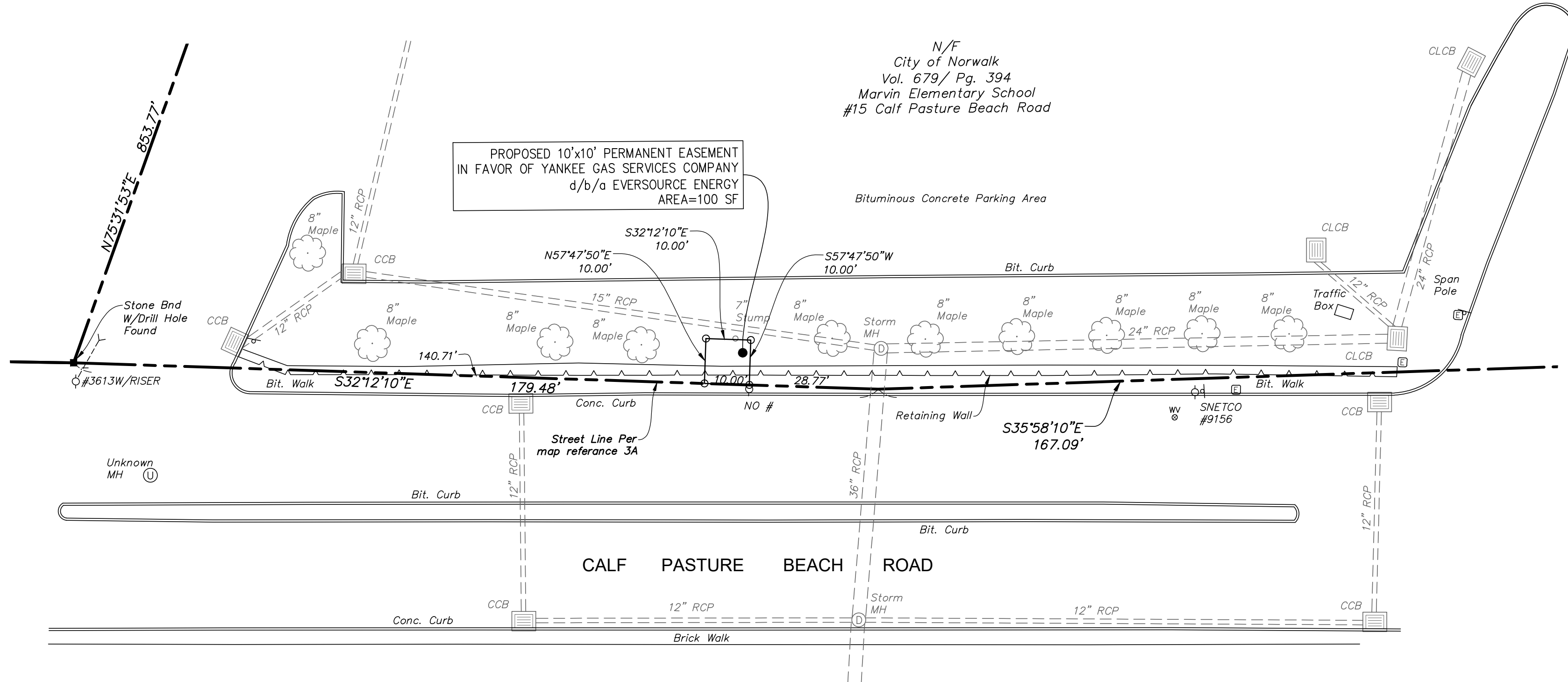
- The subsurface utilities depicted hereon conform to the following Utility Quality Levels, as defined by the American Society of Civil Engineers (ASCE) in Document CI/ASCE 38-02 titled "Standard Guidelines for the Collection and Depiction of Existing Subsurface Utility Data":
  - Sanitary Sewer: QLC
  - Storm Sewer: QLC
  - Water: QLC and QLD
  - Natural Gas: QLC and QLD
  - Electric: QLC and QLD
  - Communications: QLC and QLD

The subsurface utilities were compiled from parol evidence, record drawings, and surficial evidence located during the field survey. The Surveyor has not physically exposed the subsurface utilities, and makes no guarantee that the subsurface utilities depicted hereon comprise all such utilities within the surveyed area, either in service or abandoned. The Surveyor further does not warrant or guarantee that the subsurface utilities are in the exact location depicted, though they have been plotted, in accordance with the standard of care, from information available.

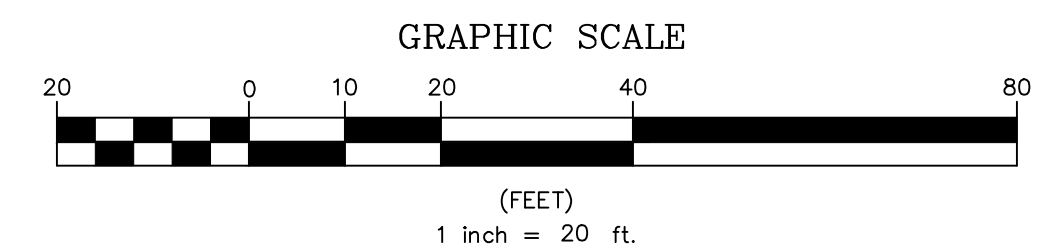
The contractor is required to utilize the local utility one call system prior to excavation for the purpose of verifying the subsurface utilities in the area.



**Vicinity Map**  
Scale 1"=1000'



**PRELIMINARY**  
05/30/2025



**Certification**

To my knowledge and belief this map is substantially correct as noted hereon.

NORMAND D. BOLDUC

L.S. No. 17,680

<b>Legend</b>			
	Property Line		Bollard
	Easement Line		Guy Wire
	Retaining Wall		Utility Pole
	Storm Sewer		Water Valve
	Monument		Hydrant
	Iron Pin, Pipe, Rebar, Drill Hole		Gas Valve
	Sign		Catch Basin
	Sanitary Manhole		Curbless Catch Basin
	Drainage Manhole		Now or Formerly (in Title of)
	Electric Manhole		
	Manhole, Utility Type Unknown		

**LRG GROUP**

- Land Planning
- Civil Engineering
- Environmental Services
- Land Surveying
- Landscape Architecture

160 West Street, Suite E  
Cromwell, CT 06416  
Tel: 860.635.2877

85 Civic Center Plaza, Suite 204  
Poughkeepsie NY 12601  
Tel: 845.243.2880

1000 Wyckoff Avenue, 3rd Floor  
Mahwah, NJ 07430  
Tel: 908.603.5730

www.lrcconsult.com

LRC Engineering and Surveying, D.P.C.  
LRC Engineering and Surveying, LLC  
LRC Environmental Services, Inc.

**EVERSOURCE ENERGY**

TITLE: EASEMENT MAP DEPICTING EASEMENT TO BE GRANTED TO YANKEE GAS SERVICES COMPANY d/b/a EVERSOURCE ENERGY ACROSS LAND OF CITY OF NORWALK 15 CALF PASTURE BEACH ROAD, NORWALK, CONNECTICUT

BY: DV/ NDB	CHKD: NDB	APP:	APP:
DATE: 5/30/2025	DATE: 5/30/2025	DATE:	DATE:
H-SCALE: 1"=20'	SIZE: ARCH C	SURVEY JOB #:	S23456
V-SCALE:	V.S.:	R.E.DWG.:	
R.E. PROJ. NUMBER:		NUSCO:	