



## **SPECIAL MEETING – FINANCE & CLAIMS COMMITTEE AGENDA**

**JANUARY 15, 2026, 6:00 PM  
BY ZOOM VIRTUAL MEETING**

To allow public access, anyone may access a meeting by telephone and/or Zoom, or a recording in the City of Norwalk YouTube channel. Specific instructions and links can be found at [norwalkct.gov/meetings](https://norwalkct.gov/meetings).



Members of the public may call in to participate. Callers will not be able to see the meeting participants. All participants will be muted upon entering the meeting. To speak, dial \*9 on the phone and you will be called on by the host of the meeting during the public comment section. All speakers must state their name and address. Comments must be on a topic on the agenda, and are limited to three minutes. Anyone disrupting the orderly conduct of the meeting, including by using threatening, hateful, or sexually-explicit language, will be removed. Please find the information using the link above.



Members of the public who wish to provide "live comments" may also use the Zoom meeting platform. All participants will be muted upon entering the meeting. To speak, click the "raise your hand indicator" and you will be called by the host of the meeting during the public comment section. All speakers must state their name and address. Comments must be on a topic on the agenda, and are limited to three minutes. Anyone disrupting the orderly conduct of the meeting, including by using threatening, hateful, or sexually-explicit language, will be removed. Please find the information using the link above.



Members of the public who wish to provide public comment are encouraged to submit those via email in advance of the meeting. For these comments to be included into the record, they must be submitted by 12:00 p.m. the day of the meeting. Please email Chitsamay Lam at [clam@norwalkct.gov](mailto:clam@norwalkct.gov) with the subject line "Public Comment" to provide written public comment prior to the meeting.

- I. CALL TO ORDER**
- II. ROLL CALL**
- III. ACCEPTANCE OF MINUTES**
  - A. Regular Meeting: 12-11-25**
- IV. PUBLIC PARTICIPATION**
- V. REPORTS**
  - A. Narrative on Tax Collections dated January 2026**
  - B. Monthly Tax Collector's Reports dated December 2025**
  - C. Approve Claims Committee Report dated January 2026**
  - D. Tax Assessor Report**

**E. Purchasing Agent Report**

**VI. OLD BUSINESS**

**VII. NEW BUSINESS**

- A. RESOLUTION: Authorize a Special Appropriation for Transportation, Mobility, & Parking department in the amount of \$500,000.00 for the Sono Roundabout project from the Municipal Grant-in-Aid Funding account 580000-5796-AID07.**
- B. Authorize the purchasing agent to issue a purchase order to GovConnection, Inc, in an amount not to exceed \$112,733.13 for Microsoft Office 365 Licenses Renewal. Account Allocation: 011370-574C**
- C. Authorize the Mayor, Barbara C. Smyth, to execute a five (5) year agreement with Charles B. Feldman & Associates, LLC for project 4477 Personal Property Audits for a total not to exceed \$165,000 for the 5 year period.Funding Available from Account # 11320-5253**

**VIII. ADJOURNMENT**

**CITY OF NORWALK  
FINANCE & CLAIMS COMMITTEE  
REGULAR MEETING  
DECEMBER 11, 2025  
BY ZOOM VIRTUAL MEETING**

To allow public access, anyone may access a meeting by telephone and/or Zoom, or a recording in the City of Norwalk YouTube channel. Specific instructions and links can be found at [norwalkct.gov/meetings](http://norwalkct.gov/meetings).



Members of the public may call in to participate. Callers will not be able to see the meeting participants. All participants will be muted upon entering the meeting. To speak, dial \*9 on the phone and you will be called on by the host of the meeting during the public comment section. All speakers must state their name and address. Comments must be on a topic on the agenda, and are limited to three minutes. Anyone disrupting the orderly conduct of the meeting, including by using threatening, hateful, or sexually-explicit language, will be removed. Please find the information using the link above.



Members of the public who wish to provide "live comments" may also use the Zoom meeting platform. All participants will be muted upon entering the meeting. To speak, click the "raise your hand indicator" and you will be called by the host of the meeting during the public comment section. All speakers must state their name and address. Comments must be on a topic on the agenda, and are limited to three minutes. Anyone disrupting the orderly conduct of the meeting, including by using threatening, hateful, or sexually-explicit language, will be removed. Please find the information using the link above.



Members of the public who wish to provide public comment are encouraged to submit those via email in advance of the meeting. For these comments to be included into the record, they must be submitted by 12:00 p.m. the day of the meeting. Please email Chitsamay Lam at [clam@norwalkct.gov](mailto:clam@norwalkct.gov) with the subject line "Public Comment" to provide written public comment prior to the meeting.

**I. CALL TO ORDER**

Chairman Frayer called the meeting to order at 7:01p.m.

**II. ROLL CALL**

Chairman Frayer called the Roll: James Frayer; Doug Sutton; Anne Wennerstrand; Johan Lopez

At Roll Call there were four (4) Committee members present, constituting a quorum. Dajuan Wiggins and Heather Dunn were absent.

**ATTENDANCE:** James Frayer, Chairman; Doug Sutton; Anne Wennerstrand; Johan Lopez

**STAFF:** Lisa Biagiarelli, Tax Collector; Paul Gorman, Tax Assessor; Jared Schmitt, Finance Director; Joyce Liu, IT Director

### **III. ACCEPTANCE OF MINUTES**

#### **A. REGULAR MEETING: 11-13-25**

There was no report on this item.

**\*\*MS. WENNERSTRAND MOVED THE ITEM**

**\*\*MR. SUTTON ABSTAINED**

**\*\*MOTION PASSED WITH ONE (1) ABSTENTION**

### **IV. PUBLIC PARTICIPATION**

There was no public participation. Chairman Frayer closed public participation at 7:03p.m.

### **V. REPORTS**

#### **A. NARRATIVE ON TAX COLLECTIONS DATED DECEMBER 2025**

Lisa Biagiarelli stated the MTS (Municipal Tax Service) billing of those out-of-state motor vehicles had a bit of an increase. There should be another billing going out within the next couple of months. They are working on changing their online provider. The Law Department is working on the contracts now. She said this will allow the taxpayers to pay a lower fee to use a credit or debit card online. They are trying to get this implemented prior to the end of the collection cycle. The committee began a brief discussion on cannabis sales. The cannabis sales have not changed much and has been very consistent month to month. The committee would like a year-to-date report on the cannabis sales.

#### **B. MONTHLY TAX COLLECTOR'S REPORTS DATED NOVEMBER 2025**

Lisa Biagiarelli said that at the end of November's report, it looks like they have dropped percentage wise even though they have collected more money. The reason for that is the infusion of the supplemental billing, which is \$3 million in receivables and is due by February 2, 2026. This was added to the system in November and increased receivables. Ms. Biagiarelli commented that they are where they are supposed to be for the month of November. They are at 53.27% of their combined levy. The second installment billing is going out this month for real estate, business, personal property, delinquent billing for motor vehicles and the motor vehicle supplemental. The supplemental motor vehicle is for bills that were not on the original 10/1/24 grand list

but came on later because they were newly registered after 10/1/24 but still within the 24-month period of that grand list, so the bills are prorated. The levy is about \$3.1 million that was added. The State has made a few changes to how billing is done for supplementals. So, they are sending out the bills with a due date of January 1, 2026, payable by February 2, 2026.

**C. APPROVE CLAIMS COMMITTEE REPORT DATED DECEMBER 2025**

Lisa Biagiarelli reported there is a special request that requires the committee's vote due to the dollar amount exceeding \$10,000.00. The special request is for a motor vehicle refund for multiple vehicles over multiple grand list years for Toyota Lease Trust in the amount of \$24,234.04.

The special request was unanimously approved by the Committee.

**D. TAX ASSESSOR REPORT**

Paul Gorman reported that the online VGSI (Vision Government Solutions Inc) has been down or at least has not been updated for years because of data issues. VGSI is their KMA system provider for real estate evaluation. The part of the system that has been down is the online system that would allow people to look up the value of any property in town that has a field card associated with it. Mr. Gorman explained what a field card is. He said that VGSI can no longer support the size of their database or how it was constructed. VGSI tried to get their system to support the city's database but could not. VGSI purchased a new company called Data Scout which is more geared toward online presences for municipalities, but they are geared towards much larger municipalities. They have been working with them for the past four (4) months to develop a new online website for the Norwalk field cards to go live with. There was a glitch that should have been corrected today. He will check tomorrow morning to ensure the glitch has been corrected, and then the go live date should be no later than next Friday and this should be much better than what they had. During the time the system was down, if someone requested information via email, phone or in person, the office would assist with the request for information. They will continue to assist anyone requesting information even when the system is running. Mr. Gorman will inquire if a tutorial will be available to anyone using the system. Once he has a definite go live date, they will put that information on the website and other various channels the city uses. They are working on finalizing the 2025 grand list. They have compiled an RFP for personal property audits and will bring that before the committee next month for approval.

**VI. OLD BUSINESS**

There was no report on Old Business

## VII. NEW BUSINESS

### A. APPROVAL FINANCE AND CLAIMS COMMITTEE 2026 MEETING CALENDAR

There was no report on this item.

**\*\*MR. SUTTON MOVED THE ITEM  
\*\*MOTION PASSED UNANIMOUSLY**

### B. AUTHORIZE THE PURCHASING AGENT TO ISSUE A PURCHASE ORDER TO STREAMLINE SOFTWARE, INC. FOR A THREE-YEAR AGREEMENT FOR SUBSCRIPTION PRO PLAN IN AN AMOUNT NOT TO EXCEED \$13,440 ANNUALLY. ACCOUNT # 011370-5742

Ms. Liu reported that they would like to move forward with DocAccess. She said it is a tool that helps them to comply with the new federal digital accessibility requirement. Under the ADA (American with Disabilities Act) title for state and local governments must ensure all digital content including website and PDF's that is accessible to people with disability. She explained the city's content and what is needed to comply. She said DocAccess provides an automated and cost-effective solution to cover large numbers of PDF's in real time. It also integrates smoothly with their existing website workflow.

She stated that she is also working with the city's ADA Coordinator on this for a solution. She said any related ADA questions she will forward to Bill. She said that anytime the Department of Justice changes the ADA requirements, DocAccess would be able to update their software, staying on top of compliance and making sure they are always legal and available to provide a service to the residents. They were able to receive this low rate because they locked in for three (3) years.

**\*\*MR. FRAYER MOVED THE ITEM  
\*\*MOTION PASSED UNANIMOUSLY**

### C. APPROVE ARPA TRANSFER REQUEST FROM 133710-5796-AEC04 PROJECT MANAGER IN THE AMOUNT OF \$156,506.66 TO THE FOLLOWING ARPA ACCOUNTS: 130100-5796-AMD01 MAYOR INITIATIVE ARPA \$103,451.34; 133710-5796-AEC16 EVENT IMPLEMENTATION PROGRAM \$40,526.42; AND 134010-5796-ARP04 PARKS AND RECR ARPA PROJECTS \$12,528.90.

Mr. Schmitt reported that ARPA funding was allocated and obligated as required by law at the end of last year. They are halfway to the next deadline which is spending the money. He explained that there may be a few more of these types of requests as they get to the finish line for each project. That is when they could really know exactly how much they're going to need for each project so they could make some transfers to use up all the ARPA money they can. There is one (1) project that will be coming in under

budget, so they want to transfer funding from there to three (3) other projects that relate to different positions. They want to use the remaining funds to cover five (5) positions through the end of the current fiscal year, June 30, 2026. The committee went into a brief discussion about the five (5) positions and the ARPA funding. The funds must be spent by December 31, 2026.

**\*\*MS. WENNERSTRAND MOVED THE ITEM**

**\*\*MOTION PASSED UNANIMOUSLY**

### VIII. ADJOURNMENT

Mr. Lopez moved to adjourn.

Motion passed unanimously.

The meeting was adjourned at 7:39p.m.



CITY OF NORWALK  
Lisa Biagiarelli, CCMC, Esq.  
Tax Collector  
125 East Avenue Room 105  
Norwalk, CT 06851  
Phone: 203- 854-7731 (main line)  
Fax: 203-854-7770

Norwalkct.gov  
[lbiagiar@norwalkct.gov](mailto:lbiagiar@norwalkct.gov)

To: Finance and Claims Committee Members  
From: Lisa Biagiarelli, Tax Collector  
Date: January 8, 2026  
Re: The Role of the Tax Collector at Finance & Claims Meetings

The Tax Collector's Office interacts with the Finance and Claims Committee on a limited basis. I attend the monthly meeting primarily to present information concerning tax refunds, also called "claims." I keep the Committee informed of current and past due tax collection activity and provide monthly reports in both spreadsheet and narrative form.

The Tax Collector's Office issues refunds in accordance with Connecticut General Statute 12-129 and generally accepted accounting principles. Most refunds occur because abatements or credits are granted by the Assessor's Office after a tax bill has already been paid. For example, taxpayers sell or otherwise dispose of motor vehicles after having already paid their tax bills in full. Many refunds are issued to motor vehicle leasing companies that pay taxes on behalf of their lessees, who subsequently change cars mid cycle and are entitled to tax refunds. Sometimes third-party agents, such as attorneys or escrow agents, make duplicate payments of bills, or misidentify a tax bill and pay on the wrong parcel.

The procedure for refunds is relatively strict in terms of documentation, although not overly burdensome to the taxpayer. We require the taxpayer to complete a form, provide a valid signature, and include backup information concerning the payment. The backup is necessary to prove both that the requesting taxpayer has, in fact, made the payment, and that this person or entity, and no other, is entitled to the refund.

Refunds less than \$10,000 are processed by the Tax Collector's Office without requiring special approval. However, these refunds are still presented to the Committee each month, and the Committee exercises oversight regarding this process. The report of refunds presented will include the name of the taxpayer, the amount of the refund, and the reason. Due to the high volume of accounts, we process literally thousands of refunds per fiscal year as part of our normal office activity.

Committee members are asked to review the listings of these refunds in order to fulfill their oversight function. If a councilperson's own name, or if the name of a relative, close acquaintance, or entity with whom they are associated (for example, an employer or a client) appears on the listing, to avoid the appearance of impropriety, the councilperson may consider recusal from discussion and / or vote.

Refunds of \$10,000 or more are considered “*special requests*.” Special requests do require the formal approval of the Finance and Claims Committee, and subsequently the Common Council. These refunds are *not* processed until we receive approval from both the Committee and the full Council. The Tax Collector will have information on any special requests available at the meeting. Special requests are listed separately from other refunds, usually toward the end of the report.

The Committee will also be asked periodically to approve tax abatements for various housing projects. These abatements stem from agreements approved by prior Councils. Partial tax abatements are granted by the City and some are subsequently submitted by our office to the state for full or partial reimbursement. For example, one agreement is for a low-income senior housing project to pay 10% its annual rental income toward taxes; the balance of the tax bill is then abated, according to the agreement. In this example, the amounts in question change semi-annually or annually to reflect the income of the project and the amount of the tax levied.

The Tax Collector’s Office also presents the Committee with reports to keep members informed of ongoing collection processes and activities. We provide monthly reports on collections, comparing the current collection cycle (year to date) with the prior year, to track our progress toward budgeted collections of both current and past due taxes. We respond to questions from Committee members about current and delinquent collection enforcement activity.

According to the organizational structure of the City, the Tax Collector reports directly to, and is under the supervision of, the Chief Financial Officer. The Tax Collector’s Office is directly responsible for the collection of approximately 90% of the city’s operating revenue. The staff of the Tax Collector’s Office includes eight fulltime employees: me as Tax Collector; Al Palumbo, Jr. as Assistant Tax Collector; Cynthia Haith as Delinquent Tax Collector; and Jeanette Lopez, Cathy Petrini, Charise Bronson, Kalenia Gross, and Joann Santiago. Both Al and Cynthia have worked for Norwalk for more than 35 years. I’ll have my 26-year anniversary in Norwalk in March, and have been collecting taxes for more than 40 years. Five of us are state certified in municipal tax collection. Jeanette and Joann are fully bilingual in English and in Spanish. Al Palumbo has an MBA, and I have a JD.

We pride ourselves on efficient, diligent collection of current and back taxes. We do most of our collection work in-house, and in so doing, save our taxpayers tens of thousands of dollars in collection fees. Our collection rate is the highest among Connecticut’s six largest cities, and we consistently achieve our budgeted collection goals, which provides stability to the city’s budget process and enhances the city’s overall financial planning and fiscal outlook.

There is extensive information on the tax collection process on our tax collector’s office homepage on the city’s website. Taxpayers may look up their taxes, and their payment history online, and can pay online. We have various flyers and information available for members of the Committee, or for their constituents, as needs arise. I am also available in person or by telephone or email to answer questions. I wish the returning members and the newly elected members of the Committee well, and I look forward to working with Mayor Smyth and all of you.



**CITY OF NORWALK**  
**Tax Collector's Office**  
**Department of Finance**  
125 East Avenue Room 105  
Norwalk, CT 06851  
Phone: 203- 854-7731 (main line)  
Fax: 203-854-7770

To: Mayor Barbara Smyth; Board of Estimate and Taxation; Finance and Claims Committee  
From: Lisa Biagiarelli, Tax Collector  
Date: January 12, 2026  
Re: Tax Collector's Narrative for **December 2025** End of Month report

As of the end of December 2025, halfway through the fiscal year, we collected more than \$235 million against our (now) \$392+ million adjusted levy. As of the end of December 2025, our current collection rate for all tax types was **59.97%**. We also collected **60.3%** of our \$20 million sewer use levy, more than \$12 million, and 75.27% of the Industrial Pretreatment Program (IPP) fee billing on behalf of the WPCA. Compared with the prior fiscal year, we ended December 2025 slightly behind last year for collection of taxes (-2.56%), sewer use (-3.12%) and the IPP fee (-1.49%), all likely due to tax bills being mailed later in the month than we would have liked.

Through the month of December 2025, we also collected an additional \$3.8 million in past due taxes, interest and fees. This amount is (net) \$1.3 million less than what had been collected in back taxes during the first half of the immediately prior fiscal year. Our office held a large tax sale during the prior fiscal year, on September 9, 2024, and back tax collections typically spike during tax sale years. We did hold a smaller tax sale this past year, in September 2025, but the focus of that sale was enforcement of zoning violation fees and blight fees, rather than past due property taxes. Our next tax sale is scheduled for Monday, July 13, 2026. That will be a large-scale sale and the primary focus will be past due taxes.

Since June 2024, the tax collector's office has been responsible for billing and for collecting a monthly municipal tax on gross receipts from cannabis sales within Norwalk. The tax rate is 3% of gross sales, and the tax is paid by all cannabis retailers, hybrid retailers and micro cultivators. From April 2024 through the end of the month December 2025, we have collected \$520,546.34 in municipal cannabis tax. We include cannabis tax receipts in a one-line notation at the bottom of our monthly reports.

Our delinquent tax collector continues to work with the Department of Health to identify establishments with past due taxes that need to be brought current to renew a health permit. She also continues filing Uniform Commercial Code (UCC-1) liens with the office of the Secretary of the State of Connecticut to secure payment of past due business personal property taxes. We are also now finishing up an effort with our Comptroller's office in which we implemented a mandatory wage garnishment for city and Board of Education employees who owed past due taxes to Norwalk.

Our third-party collection agency continues to bill on our behalf for suspended motor vehicle accounts. Through the end of December 2025, in conjunction with their efforts, we collected \$1,531,603 million in past due motor vehicle taxes and interest due directly to the City. This agency's fees are charged *in addition to* the taxes and interest due to the City and are paid by the taxpayers who owe the past due bills. We collect what is due to us in full, and do not sacrifice any of what is due to the City. We began working with this company in December 2022, and in 2025 opted to extend our three-year contract with them for an additional year. December 2025 marked three full years working with this agency.

In mid-August of 2025, our office issued the first set of tax bills for new motor vehicle accounts added by Municipal Tax Services (MTS), the vendor contracted by the city to identify unregistered or out of state motor vehicles garaged in Norwalk. The Assessor has reported on the activities of MTS at prior meetings, and that division began adding these newly identified vehicles to the tax rolls. The first set of 528 bills was issued with a pay-by date of September 12, 2025. Through the end of December 2025, we added a total receivable (net) of \$143,440.77 and have collected \$113,571.46. In accordance with the agreement between MTS and the City, Norwalk retained \$62,265.95 in taxes and interest, and we paid MTS \$51,305.51, which includes a flat fee of \$50 per vehicle as well as a portion (approximately 38%) of the newly billed / receivable tax and interest amount. I will continue to update you on our progress.

We are in the middle of our second installment collection cycle now. The last day on which to pay without interest is February 2, 2026, because February 1 falls on a Sunday. We are also now billing the supplemental motor vehicle tax for grand list 2024, representing more than \$3 million in taxes for vehicles newly registered between October 2, 2024 and September 30, 2025. These bills are due January 1, 2026, payable by February 2, 2026. Bills were mailed later than usual, but all currently due bills have been available to view and to pay online since early December.

We are in the process of changing our online and IVR (pay by phone) payment provider in accordance with the contract that was approved by the City Council in the fall of 2025. The new vendor will provide a less expensive option for taxpayers who choose this payment method. We also envision potential efficiencies in absorbing the processing fee for the E Check, as discussed at last month's meeting. We are still hoping the change will occur in time to provide reduced processing fees during this collection cycle. This is dependent upon the progress of the law department in reviewing the proposed contract between the city and the new vendor, and subsequently dependent upon our staff and IT department being able to install new equipment and receive training on how to use the new system.

We direct taxpayers to the City of Norwalk website and our tax collector's homepage, as depending on when the change in providers occurs, payments will be processed through either the current vendor's system, or that of the new vendor. Both systems clearly state the fees charged and allow the taxpayer to "back out" of the transaction before committing to the payment. We remain grateful to the departments assisting during this transition, including Purchasing, the Comptroller's Office, Information Technology, and the Corporation Counsel's office.

We began preliminary work on our 2026 tax sale at the end of December. This sale will include pursuit not only of past due taxes and sewer use charges, but also past due blight fees and zoning violation fees. We anticipate starting with 200+ properties in this sale and hope to collect between \$5-\$7 million. All tax sale work is done by the tax collector's office staff, except for title searches. Performing this work in-house saves our taxpayers from the expense of the considerable legal fees charged by attorneys or state marshals who conduct tax sales on behalf of other municipalities. At the end of December, we sent out an initial letter to more than 120 properties that are scheduled for inclusion in the 2026 sale due to the number of years in arrears, or the dollar amount owed. To date, we have collected more than \$460,000 since that mailing.

We will appreciate the continued support of policy makers, including members of the City Council and the Administration, in situations when our enforcement activities, such as the tax sale, are challenged. Maintaining a high tax collection rate through consistent enforcement allows for a fairer distribution of the tax burden. Maintaining a high current and back tax collection rate allows the budget making authority to set lower mill rates, as there can be less of an allowance for "uncollectible" taxes - taxes not timely paid when billed. Conversely, a lower collection rate, and less efficient tax collection, would require higher mill rates, and a correspondingly higher tax levy to be borne by all taxpayers. This principle inspires all our billing and tax collection enforcement activities, and remains in sharp focus as the new Council is seated and the FYE 2027 budget cycle progresses.

FISCAL YEAR 2025-2026

(2024 GRAND LIST)

ADJ. TAX COLLECTIONS

	ORIGINAL LEVY	JUN 25 - DEC 25	COLLECTION %	CORRECTED LEVY*	CHANGE IN LEVY	COLLECTION %
AUTOMOBILE-REGULAR	\$19,621,713.02	\$17,173,310.34	87.52%	\$19,470,039.78	(\$151,673.24)	88.20%
AUTOMOBILE-SUPPLEMENTAL	\$3,115,978.84	\$361,139.89	11.59%	\$3,112,358.60	(\$3,620.24)	11.60%
PERSONAL PROPERTY	\$28,666,103.44	\$16,187,187.11	56.47%	\$28,511,017.86	(\$155,085.58)	56.78%
REAL ESTATE	\$340,880,548.34	\$201,465,257.84	59.10%	\$341,086,633.00	\$206,084.66	59.07%
TOTAL TAX	\$392,284,343.64	\$235,186,895.18	59.95%	\$392,180,049.24	(\$104,294.40)	59.97%

SEWER USE

	\$19,835,102.00	\$12,071,644.47	60.86%	\$20,020,112.00	\$185,010.00	60.30%
IPP FEE	\$181,250.00	\$137,931.21	76.10%	\$183,250.00	\$2,000.00	75.27%

FISCAL YEAR 2024-2025

(2023 GRAND LIST)

	ORIGINAL LEVY	JUN 24 - DEC 24	COLLECTION %	CORRECTED LEVY*	CHANGE IN LEVY	COLLECTION %
AUTOMOBILE-REGULAR	\$30,485,520.62	\$25,989,031.25	85.28%	\$30,092,935.12	(\$392,585.50)	86.40%
AUTOMOBILE-SUPPLEMENTAL	\$4,617,948.35	\$310,272.34	6.72%	\$4,616,733.91	(\$1,214.44)	6.72%
PERSONAL PROPERTY	\$24,660,647.62	\$13,936,214.40	56.51%	\$24,522,973.26	(\$137,674.36)	56.83%
REAL ESTATE	\$314,512,159.95	\$192,378,312.53	61.17%	\$312,807,252.60	(\$1,704,907.35)	61.50%
TOTAL TAX	\$374,276,276.54	\$232,623,830.52	62.15%	\$372,039,894.89	(\$2,236,381.65)	62.53%

SEWER USE

	\$19,044,215.00	\$12,043,126.27	63.24%	\$18,989,961.00	(\$54,234.00)	63.42%
IPP FEE	\$167,750.00	\$151,595.01	90.37%	\$197,499.55	\$29,749.55	76.76%

TAX DIFFERENCE 2024 G.L. vs. 2023 G.L.

INCREASE/(DECREASE)

	\$18,008,067.10	\$2,563,064.66	-2.20%	\$20,140,154.35	\$2,132,087.25	-2.56%
--	-----------------	----------------	--------	-----------------	----------------	--------

SEWER DIFFERENCE 2024 G.L. vs. 2023 G.L.

INCREASE/(DECREASE)

	\$790,887.00	\$28,518.20	-2.38%	\$1,030,131.00	\$239,244.00	-3.12%
--	--------------	-------------	--------	----------------	--------------	--------

IPP DIFFERENCE 2024 G.L. vs. 2023 G.L.

INCREASE/(DECREASE)

	\$13,500.00	(\$13,663.80)	-14.27%	(\$14,249.55)	(\$27,749.55)	-1.49%
--	-------------	---------------	---------	---------------	---------------	--------

BACK TAXES COLLECTED

	FISCAL YR 2025-2026 (JUL 25 - DEC 25)	FISCAL YR 2024-2025 (JUL 24 - DEC 24)	CUR YR vs. PRIOR YR INC/DEC
PRIOR TAXES	\$2,399,199.11	\$3,195,226.54	(\$796,027.43)
PRIOR SEWER USE FEE	\$114,198.87	\$172,587.01	(\$58,388.14)
PRIOR IPP FEE	\$4,029.18	\$4,206.27	(\$177.09)
TOTAL PRIOR TAX, SEWER & IPP	\$2,517,427.16	\$3,372,019.82	(\$854,592.66)

CURRENT INTEREST

	\$354,215.34	\$430,374.13	(\$76,158.79)
--	--------------	--------------	---------------

SEWER USE FEE INTEREST

	\$653,386.16	\$851,644.70	(\$198,258.54)
--	--------------	--------------	----------------

IPP FEE INTEREST

	\$48,165.12	\$73,429.61	(\$25,264.49)
--	-------------	-------------	---------------

TOTAL INTEREST COLLECTED

	\$2,469.42	\$3,122.94	(\$653.52)
--	------------	------------	------------

PRIOR LIEN FEE

	\$1,058,236.04	\$1,358,571.38	(\$300,335.34)
--	----------------	----------------	----------------

CURRENT LIEN FEE

	\$7,879.28	\$12,744.56	(\$4,865.28)
--	------------	-------------	--------------

TOTAL LIEN FEE COLLECTED

	\$0.00	\$0.00	\$0.00
--	--------	--------	--------

MISC FEES COLLECTED\*\*

	\$7,879.28	\$12,744.56	(\$4,865.28)
--	------------	-------------	--------------

TOTAL PRIOR TAX, ALL INTEREST & ALL FEES

	\$3,846,983.38	\$5,160,596.99	(\$1,313,613.61)
--	----------------	----------------	------------------

TOTAL TAX BILLED/PAID ON GROSS RECEIPTS FROM CANNABIS SINCE 05/24

	\$	\$	\$520,546.34
--	----	----	--------------

AGENDA

CLAIMS COMMITTEE MEETING

JAN 15<sup>TH</sup>

REFUNDS PROCESSED CLAIMS COMMITTEE

APPROVED BY TAX COLLECTOR

PAY TO:

BILL No & AMOUNT REFUNDED

REASON

**MOTOR VEHICLE**

ABBAY NII A	24-MV-300163 \$26.14	PRORATION
ACAR LEASING LTD	24-MV-300400 \$324.87	PRORATION
	24-MV-300261 \$146.61	PRORATION
ACAR LEASING LTD	24-MV-300424 \$206.36	PRORATION
	24-MV-300506 \$308.26	PRORATION
ARI FLEET LT LTD	22/23-MV-SEE ATTACHED \$4,899.37	PROTN/ABMNT
BLAKZ-ARCE ROSA M	23-MV-306428 \$43.08 +\$.91 INT	PRORATION
COLVIN SHUJUN F	24-MV-313392 \$19.39	PYMNT POSTMKD ON TIME
DAIMLER TRUST	24-MV-315589 \$115.65	PRORATION
ENTERPRISE FM TRUST	24-MV-SEE ATTACHED \$2,570.00	PRORATION
GERVASE RICHARD G JR & ANN	23-MV-326554 \$18.73	PRORATION
HERNANDEZ MOYETONES EULOGIO	24-MV-330131 \$413.38	MTS ABATEMENT
HYUNDAI LEASE TITLING	23-MV-333282 \$434.58	PRORATION
HYUNDAI LEASE TITLING	24-MV-332501 \$43.80	PRORATION
HYUNDAI LEASE TITLING	24-MV-332522 \$314.51	PRORATION
JACKSON JESSICA	24-MV-333573 \$529.44	OVERPAYMENT
JP MORGAN CHASE BANK	22-24-MV-SEE ATTACHED \$1,502.58	ABATEMENT
JP MORGAN CHASE BANK	24-MV-335028 \$53.61	PRORATION
LOPEZ-ESCALANTE WILDER J	22-MV-341014 \$510.78	MTS ABATEMENT
	23-MV-341402 \$454.44 + \$20.45 INT	MTS ABATEMENT
	22-MV-341015 \$40.73	MTS ABATEMENT

	23-MV-341401	\$43.82 + \$2.00 INT	MTS ABATEMENT
LORRAINE CAREN L	24-MV-340760	\$16.28	PRORATION
MARROQUIN MIRIAM S	24-MV-342777	\$46.33	PRORATION
MARTINEZ MIRIAM C	23-MV-343886	\$33.66	PRORATION
MONTES-DEOCA RODY E	24-MV-346871	\$24.68	PRORATION
NISSAN MOTOR ACCEPTANCE	23/24-MV-SEE ATTACHED	\$6,530.44	PROTN/ABMNT
NISSAN MOTOR ACCEPTANCE	23/24-MV-SEE ATTACHED	\$7,823.84	PROTN/ABMNT
NISSAN MOTOR ACCEPTANCE	22/23-MV-SEE ATTACHED	\$1,016.33	PROTN/ABMNT
PEREZ CRUZ JORGE M	23/24-MV-SEE ATTACHED	\$353.08	PRORATION
SHORELINE PAINTING & DRYWALL	22-MV-362720	\$325.78 + \$29.32 INT	MTS ABATEMENT
	23-MV-363765	\$264.87	MTS ABATEMENT
	24-MV-362977	\$217.80	MTS ABATEMENT
SMITH JACK A & DEBORAH B	24-MV-363958	\$8.97	PYMNT POSTMKD ON TIME
SOLIS-SOSA EDVIN G	23-MV-365080	\$97.06	ABATEMENT
	24-MV-364274	\$44.44	ABATEMENT
TITANIUM ELECTRIC LLC	23-MV-368359	\$376.54	MTS ABATEMENT
	24-MV-367468	\$12.63	MTS ABATEMENT
TOYOTA LEASE TRUST	24-MV-SEE ATTACHED	\$1,353.57	PRORATION
TOYOTA LEASE TRUST	24-MV-SEE ATTACHED	\$5,162.08	PROTN/ABMNT
TOYOTA LEASE TRUST	24-MV-376143	\$358.03	PRORATION
TOYOTA LEASE TRUST	24-MV-SEE ATTACHED	\$241.76	PRORATION
VAULT TRUST	24-MV-SEE ATTACHED	\$1,492.20	PRORATION
VCFS AUTO LEASING CO	24-MV-371319	\$196.68	PRORATION
VCFS AUTO LEASING CO	24-MV-371215	\$173.84	PRORATION
WALLOUR MARY F	24-MV-373062	\$20.15	PRORATION
WILSON THOMAS J	24-MV-374354	\$47.70	PRORATION

## PERSONAL PROPERTY

WILLARD STORAGE LLC

4 WILLARD ROAD

143062

24-PP-202782 \$491.20

OVERPAYMENT

## SPECIAL REQUEST

TOYOTA LEASE TRUST

23-MV-SEE ATTACHED \$13,765.43

PROTN/ABMT

NORWALK CENTER LLC

10 NORDEN PLACE UNIT A

3-17-40-A

23-RE-119321 \$78,665.54

COURT STIP SETTLEMENT

**\*MTS SAYS VEHICLE SHOULD BE TAXED BY STAMFORD, DMV SAYS VEHICLE IS REGISTERED IN NORWALK\***

**Inquiry Report**  
 Bill#  
 Unique\_id  
 Dist

**NORMALK TAX COLLECTOR**  
 Name  
 Address  
 City/State/Zip

**Interest Date : 11/04/2025**  
 Prop Loc/Veh. Info./Plan-Sew  
 MBL/LINK #  
 Flags

Bill#	Unique_id	Dist	Name	Address	City/State/Zip	Interest Date	Prop Loc/Veh. Info./Plan-Sew	MBL/LINK #	Flags	TOT Inst	TOT Adj	TOT Paid	L/F/Bint Due	Page :1	Tax Due	Int Due	Balance Due Now	Discount
2021-03-0303083-00	303083	1	ARI FLEET LT	4001 LEADENHALL RD	MT LAUREL NJ 08054	6486DC/1FMCU9GX0FUB97659/2015/FORD/ESCAPE S				305.52	-305.52	305.52	0.00		-305.52	0.00	-305.52	0.00
2022-03-0303136-00	303136	M005	ARI FLEET LT	4001 LEADENHALL RD	MT LAUREL NJ 08054	6486DC/1FMCU9GX0FUB97659/2015/FORD/ESCAPE S				275.12	-275.12	275.12	0.00		-275.12	0.00	-275.12	0.00
2022-03-0303174-00	303174	M005	ARI FLEET LT LTD	4001 LEADENHALL RD	MOUNT LAUREL NJ 80544-0611	C140415/1FDWE3FSOHDC47296/2017/FORD/ES350 SUP				34.64	-34.64	565.16	0.00		-565.16	0.00	-565.16	0.00
2023-03-0303144-00	303144	M032	ARI FLEET LT	4001 LEADENHALL RD	MT LAUREL NJ 08054	6486DC/1FMCU9GX0FUB97659/2015/FORD/ESCAPE S				231.12	-231.12	231.12	0.00		-231.12	0.00	-231.12	0.00
2023-03-0303146-00	303146	M032	ARI FLEET LT	4001 LEADENHALL RD	MT LAUREL NJ 08054	C129346/1FTMF1EB4JKE67590/2018/FORD/F150				564.15	-376.27	564.15	0.00		-376.27	0.00	-376.27	0.00
2023-03-0303155-00	303155	M032	ARI FLEET LT LTD	4001 LEADENHALL RD	MOUNT LAUREL NJ 08054-4611	AB05258/1FDUFGT5HEE07945/2017/FORD/F550 SUP				902.06	-676.53	902.06	0.00		-676.53	0.00	-676.53	0.00
2023-03-0303157-00	303157	M032	ARI FLEET LT LTD	4001 LEADENHALL RD	MOUNT LAUREL NJ 08054-4611	AB05264/1FDUFGT5HEE51559/2017/FORD/F550 SUP				902.06	-601.68	902.06	0.00		-601.68	0.00	-601.68	0.00
2023-03-0303163-00	303163	M032	ARI FLEET LT LTD	4001 LEADENHALL RD	MOUNT LAUREL NJ 08054-4611	AB05271/1FDUFGT5HEE71254/2018/FORD/F550 SUP				964.06	-723.04	964.06	0.00		-723.04	0.00	-723.04	0.00
2023-03-0303216-00	303216	M032	ARI FLEET LT LTD	4001 LEADENHALL RD	MOUNT LAUREL NJ 08054-4611	C129323/1FTMF1CB8JKC15795/2018/FORD/F150				495.99	-289.15	495.99	0.00		-289.15	0.00	-289.15	0.00
2023-03-0303218-00	303218	M032	ARI FLEET LT LTD	4001 LEADENHALL RD	MOUNT LAUREL NJ 08054-4611	C140415/1FDWE3FSOHDC47296/2017/FORD/ES350 SUP				587.53	-587.53	587.53	0.00		-587.53	0.00	-587.53	0.00
2023-03-0303220-00	303220	M032	ARI FLEET LT LTD	4001 LEADENHALL RD	MOUNT LAUREL NJ 08054-4611	C191262/1FMCU0G6DKUB11749/2019/FORD/ESCAPE S				402.18	-268.25	402.18	0.00		-268.25	0.00	-268.25	0.00
# Of Acct (s) : 11										5,664.43	-4,899.37	6,194.95	0.00		-4,899.37	0.00	-4,899.37	0.00

NOV 04 2025

**JUN 16 2023**

**Inquiry Report**      **NORWALK TAX COLLECTOR**      **Print Date : 07/31/2025**      **Page : 11**  
 Bill#      Name      Prop Loc/Veh. Info. / Plan-Sew      TOT Inst      Tax Due      Balance  
 Unique\_id      Address      MBL/LINK #      TOT Adj      Int Due      Due Now  
 Dist      City/State/zip      Flags      TOT Paid      L/F/Bint Due      Discount

2024-03-0320671-00      ENTERPRISE FM TRUST      BN94872/CF1G0ABC1R8337846/2024/SUBAR/IMPRESA      318.78      -159.39      -159.39

320671      2281 BALL DR      LINK # 2024-MV-0049197      -159.39      0.00      -159.39  
 M014      SAINT LOUIS MO 63146-8603      Bank - M014/DMV CIVLS: 105513-7400481-Y      318.78      0.00      0.00

2024-03-0320678-00      ENTERPRISE FM TRUST      C140270/NMOLST7FH1304131/2017/FORD/TRANSIT      216.26      -180.14      -180.14  
 320678      2281 BALL DR      LINK # 2024-MV-0049185      -180.14      0.00      -180.14  
 M014      SAINT LOUIS MO 63146-8603      Bank - M014/DMV CIVLS: 105513-4747153-Y      216.26      0.00      0.00

2024-03-0320683-00      ENTERPRISE FM TRUST      C211149/1GCZGHFGK1191789/2016/CHEVR/EXPRESS      267.96      -133.98      -133.98  
 320683      2281 BALL DR      LINK # 2024-MV-0049184      -133.98      0.00      -133.98  
 M014      SAINT LOUIS MO 63146-8603      Bank - M014/DMV CIVLS: 105513-3833507-Y      267.96      0.00      0.00

2024-03-0320687-00      ENTERPRISE FM TRUST      C237600/1GCWGFPP6L1242578/2020/CHEVR/EXPRESS      369.60      -123.07      -123.07  
 320687      2281 BALL DR      LINK # 2024-MV-0049186      -123.07      0.00      -123.07  
 M014      SAINT LOUIS MO 63146-8603      Bank - M014/DMV CIVLS: 105513-5899075-Y      369.60      0.00      0.00

2024-03-0320688-00      ENTERPRISE FM TRUST      C239018/1GCWGFPP6L1231080/2020/CHEVR/EXPRESS      369.60      -277.20      -277.20  
 320688      2281 BALL DR      LINK # 2024-MV-0049186      -277.20      0.00      -277.20  
 M014      SAINT LOUIS MO 63146-8603      Bank - M014/DMV CIVLS: 105513-5938684-Y      369.60      0.00      0.00

2024-03-0320691-00      ENTERPRISE FM TRUST      C259118/1GCWGFPP6L1230966/2020/CHEVR/EXPRESS      369.60      -123.07      -123.07  
 320691      2281 BALL DR      LINK # 2024-MV-0049186      -123.07      0.00      -123.07  
 M014      SAINT LOUIS MO 63146-8603      Bank - M014/DMV CIVLS: 105513-5829519-Y      369.60      0.00      0.00

2024-03-0320694-00      ENTERPRISE FM TRUST      C267843/1FTBR1C8LKB73553/2020/FORD/TRANSIT      394.68      -328.77      -328.77  
 320694      2281 BALL DR      LINK # 2024-MV-0049187      -328.77      0.00      -328.77  
 M014      SAINT LOUIS MO 63146-8603      Bank - M014/DMV CIVLS: 105513-6117882-Y      394.68      0.00      0.00

2024-03-0320710-00      ENTERPRISE FM TRUST      C310475/1FMCU9G6XNUA00826/2022/FORD/ESCAPE S      351.56      -175.78      -175.78  
 320710      2281 BALL DR      LINK # 2024-MV-0049189      -175.78      0.00      -175.78  
 M014      SAINT LOUIS MO 63146-8603      Bank - M014/DMV CIVLS: 105513-6612296-Y      351.56      0.00      0.00

2024-03-0320713-00      ENTERPRISE FM TRUST      C316058/1FMCU9F65NNUB00138/2022/FORD/ESCAPE S      333.30      -222.31      -222.31  
 320713      2281 BALL DR      LINK # 2024-MV-0049189      -222.31      0.00      -222.31  
 M014      SAINT LOUIS MO 63146-8603      Bank - M014/DMV CIVLS: 105513-6714704-Y      333.30      0.00      0.00

2024-03-0320737-00      ENTERPRISE FM TRUST      C344586/1FTBR1C82PKA91907/2023/FORD/TRANSIT      592.02      -493.15      -493.15  
 320737      2281 BALL DR      LINK # 2024-MV-0049193      -493.15      0.00      -493.15  
 M014      SAINT LOUIS MO 63146-8603      Bank - M014/DMV CIVLS: 105513-7003712-Y      592.02      0.00      0.00

2024-03-0320746-00      ENTERPRISE FM TRUST      C356172/5N1BT3AB6PC795612/2023/NISSA/ROGUE S      377.74      -251.94      -251.94  
 320746      2281 BALL DR      LINK # 2024-MV-0049192      -251.94      0.00      -251.94  
 M014      SAINT LOUIS MO 63146-8603      Bank - M014/DMV CIVLS: 105513-6974645-Y      377.74      0.00      0.00

2024-03-0320761-00      ENTERPRISE FM TRUST      C380555/3N1CP5BV9NL506969/2022/NISSA/KICKS S      242.66      -101.20      -101.20  
 320761      2281 BALL DR      LINK # 2024-MV-0049196      -101.20      0.00      -101.20  
 M014      SAINT LOUIS MO 63146-8603      Bank - M014/DMV CIVLS: 105513-7394181-Y      242.66      0.00      0.00

# Of Acct (s) : 12      4,203.76      -2,570.00      -2,570.00  
 -2,570.00      4,203.76      0.00      0.00



**Inquiry Report**  
 Bill# Name  
 Address  
 City/State/Zip

**NORWALK TAX COLLECTOR**  
 Name  
 Address  
 City/State/Zip

Interest Date : 11/10/2025  
 Prop Loc/Veh. Info./Plan-Sew  
 MBL/LINK #  
 Flags

2023-03-0350080-00	2023-03-0350124-00	2023-03-0350141-00	2023-03-0350144-00	2023-03-0350204-00	2023-03-0350215-00	2023-03-0350277-00	2023-03-0350281-00	2023-03-0350294-00	2023-03-0350306-00	2023-03-0350313-00	2023-03-0350314-00	2023-03-0350334-00
350080 M046	350124 M046	350141 M046	350144 M046	350204 M046	350215 M046	350277 M046	350281 M046	350294 M046	350306 M046	350313 M046	350314 M046	
NISSAN INFINITI LT LLC	NISSAN INFINITI LT LLC	NISSAN INFINITI LT LLC	NISSAN INFINITI LT LLC	NISSAN INFINITI LT LLC	NISSAN INFINITI LT LLC	NISSAN INFINITI LT LLC	NISSAN INFINITI LT LLC	NISSAN INFINITI LT LLC	NISSAN INFINITI LT LLC	NISSAN INFINITI LT LLC	NISSAN INFINITI LT LLC	NISSAN INFINITI LT LLC
P O BOX 254648 SACRAMENTO CA 95865	P O BOX 254648 SACRAMENTO CA 95865	P O BOX 254648 SACRAMENTO CA 95865	P O BOX 254648 SACRAMENTO CA 95865	P O BOX 254648 SACRAMENTO CA 95865	P O BOX 254648 SACRAMENTO CA 95865	P O BOX 254648 SACRAMENTO CA 95865	P O BOX 254648 SACRAMENTO CA 95865	P O BOX 254648 SACRAMENTO CA 95865	P O BOX 254648 SACRAMENTO CA 95865	P O BOX 254648 SACRAMENTO CA 95865	P O BOX 254648 SACRAMENTO CA 95865	P O BOX 254648 SACRAMENTO CA 95865
AE66382/5N1A1T3CB6MC703631/2021/NISSA/ROGUE SL	AL00448/1N4BL4CW2NNA420415/2022/NISSA/ALTIMA S	AM76921/JN8AT3CB8MW213988/2021/NISSA/ROGUE SL	AN07093/3N1AB8DV8NY319830/2022/NISSA/SENTRA S	AU77418/3PCAUS5B8XMF125818/2021/INFIN/QX50 LUX	AW22645/5N1DL0MM6LCS06615/2020/INFIN/QX60 LUX	BB17034/1N4BL4CW2NNA420415/2022/NISSA/ALTIMA S	BB61095/1N4BL4CW8PN358621/2023/NISSA/ALTIMA S	BC09703/JN1BJ1CW7LM389638/2020/NISSA/ROGUE SP	BC73152/3N1AB8CV9MY202807/2021/NISSA/SENTRA S	BD35148/JN8AT3DD6MW310221/2021/NISSA/ROGUE PL	BD38603/JN8AT3DD6MW310638/2021/NISSA/ROGUE PL	BE51459/3N1AB8CV9MY324986/2021/NISSA/SENTRA S
LINK # 2023-MV-0046487	LINK # 2023-MV-0046491	LINK # 2023-MV-0046493	LINK # 2023-MV-0046493	LINK # 2023-MV-0046499	LINK # 2023-MV-0046506	LINK # 2023-MV-0046507	LINK # 2023-MV-0046508	LINK # 2023-MV-0046509	LINK # 2023-MV-0046510	LINK # 2023-MV-0046510	LINK # 2023-MV-0046510	LINK # 2023-MV-0046510
Bank - M046/DWV CIVLS: 139836-6130491-Y	Bank - M046/DWV CIVLS: 139836-6807855-Y	Bank - M046/DWV CIVLS: 139836-6158574-Y	Bank - M046/DWV CIVLS: 139836-6931958-Y	Bank - M046/DWV CIVLS: 139836-6471248-Y	Bank - M046/DWV CIVLS: 139836-568403-Y	Bank - M046/DWV CIVLS: 139836-6973741-Y	Bank - M046/DWV CIVLS: 139836-6235605-Y	Bank - M046/DWV CIVLS: 139836-6273007-Y	Bank - M046/DWV CIVLS: 139836-6388766-Y	Bank - M046/DWV CIVLS: 139836-6345620-Y	Bank - M046/DWV CIVLS: 139836-6345620-Y	Bank - M046/DWV CIVLS: 139836-6345620-Y
TOT Inst 665.11	TOT Adj -498.82	TOT Paid 665.11	TOT Adj -221.48	TOT Paid 710.55	TOT Adj -184.05	TOT Paid 672.57	TOT Adj -112.31	TOT Paid 489.82	TOT Adj -477.81	TOT Paid 718.02	TOT Adj -119.91	TOT Paid 718.02
Tax Due -498.82	Int Due 0.00	L/F/Bint Due 0.00	Int Due 0.00	Int Due 0.00	Int Due 0.00	Int Due 0.00	Int Due 0.00	Int Due 0.00	Int Due 0.00	Int Due 0.00	Int Due 0.00	Int Due 0.00
Balance Due Now -498.82	Balance Due Now -502.12	Balance Due Now -221.48	Balance Due Now -93.55	Balance Due Now -355.28	Balance Due Now -184.05	Balance Due Now -112.31	Balance Due Now -244.91	Balance Due Now -477.81	Balance Due Now -477.81	Balance Due Now -59.60	Balance Due Now -119.91	Balance Due Now -119.91
Discount 0.00	Discount 0.00	Discount 0.00	Discount 0.00	Discount 0.00	Discount 0.00	Discount 0.00	Discount 0.00	Discount 0.00	Discount 0.00	Discount 0.00	Discount 0.00	Discount 0.00

**RECEIVED**  
 NOV 24 2025  
 RYAN BULLOCK  
 612315

NOV 10 2025  
 718.02

350334 P O BOX 254648 477.81 -358.36 -358.36  
M046 SACRAMENTO CA 95865 Bank - M046/DMV CIVLS: 139836-6451100-Y -358.36 0.00 -358.36  
2023-03-0350364-00 NISSAN INFINITI LT LLC BG20137/3N1AB8CV2N269394/2022/NISSA/SENTRA S 477.81 0.00 0.00

350364 P O BOX 254648 523.90 -43.49 -43.49  
M046 SACRAMENTO CA 95865 LINK # 2023-MV-0046515 -43.49 0.00 -43.49  
2023-03-0350397-00 NISSAN INFINITI LT LLC Bank - M046/DMV CIVLS: 139836-6752860-Y 523.90 0.00 0.00

350397 P O BOX 254648 874.80 -364.79 -364.79  
M046 SACRAMENTO CA 95865 LINK # 2023-MV-0046518 -364.79 0.00 -364.79  
2023-03-0350545-00 NISSAN INFINITI LT LLC Bank - M046/DMV CIVLS: 139836-6847604-Y 874.80 0.00 0.00

350545 P O BOX 254648 676.14 -338.07 -338.07  
M046 SACRAMENTO CA 95865 LINK # 2023-MV-0046533 -338.07 0.00 -338.07  
2023-03-0350580-00 NISSAN INFINITI LT LLC Bank - M046/DMV CIVLS: 139836-6158661-Y 676.14 0.00 0.00

350580 P O BOX 254648 496.64 -207.10 -207.10  
M046 SACRAMENTO CA 95865 LINK # 2023-MV-0046537 -207.10 0.00 -207.10  
2023-03-0350623-00 NISSAN INFINITI LT LLC Bank - M046/DMV CIVLS: 139836-6247596-Y 496.64 0.00 0.00

350623 P O BOX 254648 529.42 -88.42 -88.42  
M046 SACRAMENTO CA 95865 LINK # 2023-MV-0046541 -88.42 0.00 -88.42  
2023-03-0350640-00 NISSAN INFINITI LT LLC Bank - M046/DMV CIVLS: 139836-6554945-Y 529.42 0.00 0.00

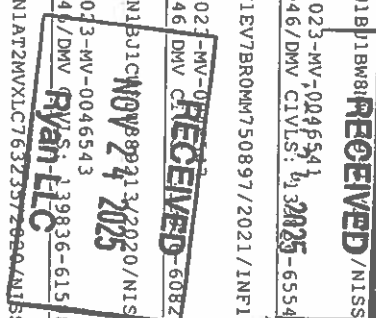
350640 P O BOX 254648 706.01 -588.12 -588.12  
M046 SACRAMENTO CA 95865 LINK # 2023-MV-0046543 -588.12 0.00 -588.12  
2023-03-0350644-00 NISSAN INFINITI LT LLC Bank - M046/DMV CIVLS: 139836-615854-Y 706.01 0.00 0.00

409621 P O BOX 254648 489.82 -285.55 -285.55  
S816 SACRAMENTO CA 95865 LINK # 2023-MS-0010961 -285.55 0.00 -285.55  
2023-04-0409621-00 NISSAN INFINITI LT LLC Bank - S816/DMV CIVLS: 139836-5745024-Y 489.82 0.00 0.00

2024-03-0349402-00 NISSAN INFINITI LT LLC 462.88 -462.88 -462.88  
349402 P O BOX 254648 LINK # 2024-MV-0049530 -462.88 0.00 -462.88  
M025 SACRAMENTO CA 95865 Back Taxes/Bank - M025/DMV CIVLS: 139836-6931958-Y 462.88 0.00 0.00

2024-03-0349453-00 NISSAN INFINITI LT LLC 272.36 -272.36 -272.36  
349453 P O BOX 254648 LINK # 2024-MV-0049511 -272.36 0.00 -272.36  
M025 SACRAMENTO CA 95865 Back Taxes/Bank - M025/DMV CIVLS: 139836-5745024-Y 272.36 0.00 0.00

# Of Acct (s) : 23 13,359.84 -6,530.44 -6,530.44  
-6,530.44 0.00 -6,530.44  
13,359.84 0.00 0.00



**Inquiry Report**  
 Bill# Unique\_id Dist  
 Name Address City/State/zip

**NORMALK TAX COLLECTOR**  
 Name Address City/State/zip

Interest Date : 12/04/2025  
 Prop Loc/Veh. Info./Plan-Sew MBL/LINK #  
 Flags

TOT Inst Tax Due  
 TOT Adj Int Due  
 TOT Paid L/F/Bint Due  
 Balance Due Now  
 Discount

**DEC 4 2025**

Page : 1

2023-03-0350300-00 NISSAN INFINITI LT LLC  
 350300 P O BOX 254648  
 M046 SACRAMENTO CA 95865  
 BC48357/1N6ED0E84MN707810/2021/NISSA/FRONTIER  
 LINK # 2023-MV-0046509  
 Bank - M046/DWV CIVLS: 139836-6277648-Y  
 676.14 -338.07 -338.07  
 -338.07 0.00 -338.07  
 676.14 0.00 0.00

2024-03-0349252-00 NISSAN INFINITI LT LLC  
 349252 P O BOX 254648  
 M025 SACRAMENTO CA 95865  
 291XVM/JN1BJB3NM682604/2022/NISSA/ROGUE SP  
 LINK # 2024-MV-0049521  
 Back Taxes/Bank - M025/DWV CIVLS: 139836-6659875-Y  
 336.82 -140.45 -140.45  
 -140.45 0.00 -140.45  
 336.82 0.00 0.00

2024-03-0349263-00 NISSAN INFINITI LT LLC  
 349263 P O BOX 254648  
 M025 SACRAMENTO CA 95865  
 379TVM/5N1A22BS0WC135774/2021/NISSA/MURANO S  
 LINK # 2024-MV-0049518  
 Back Taxes/Bank - M025/DWV CIVLS: 139836-6572692-Y  
 429.66 -250.49 -250.49  
 -250.49 0.00 -250.49  
 429.66 0.00 0.00

2024-03-0349267-00 NISSAN INFINITI LT LLC  
 349267 P O BOX 254648  
 M025 SACRAMENTO CA 95865  
 3AEX6/1N6ED1EK1NN626528/2022/NISSA/FRONTIER  
 LINK # 2024-MV-0049516  
 Back Taxes/Bank - M025/DWV CIVLS: 139836-6535058-Y  
 432.96 -324.72 -324.72  
 -324.72 0.00 -324.72  
 432.96 0.00 0.00

2024-03-0349366-00 NISSAN INFINITI LT LLC  
 349366 P O BOX 254648  
 M025 SACRAMENTO CA 95865  
 AG89726/JN1BJB5NM682507/2022/NISSA/ROGUE SP  
 LINK # 2024-MV-0049520  
 Back Taxes/Bank - M025/DWV CIVLS: 139836-6645289-Y  
 336.82 -168.41 -168.41  
 -168.41 0.00 -168.41  
 336.82 0.00 0.00

2024-03-0349392-00 NISSAN INFINITI LT LLC  
 349392 P O BOX 254648  
 M025 SACRAMENTO CA 95865  
 AL65273/5N1DR3DK7PC249209/2023/NISSA/PATHEFIND  
 LINK # 2024-MV-0049533  
 Back Taxes/Bank - M025/DWV CIVLS: 139836-6989153-Y  
 652.74 -272.18 -272.18  
 -272.18 0.00 -272.18  
 652.74 0.00 0.00

2024-03-0349416-00 NISSAN INFINITI LT LLC  
 349416 P O BOX 254648  
 M025 SACRAMENTO CA 95865  
 AS00291/JN8BT3BB4MW330264/2022/NISSA/ROGUE SV  
 LINK # 2024-MV-0049519  
 Back Taxes/Bank - M025/DWV CIVLS: 139836-6614922-Y  
 368.28 -214.70 -214.70  
 -214.70 0.00 -214.70  
 368.28 0.00 0.00

2024-03-0349418-00 NISSAN INFINITI LT LLC  
 349418 P O BOX 254648  
 M025 SACRAMENTO CA 95865  
 AS15323/3N1AB8DV2WY331485/2021/NISSA/SENTRA S  
 LINK # 2024-MV-0049514  
 Back Taxes/Bank - M025/DWV CIVLS: 139836-6497295-Y  
 251.24 -188.43 -188.43  
 -188.43 0.00 -188.43  
 251.24 0.00 0.00

2024-03-0349423-00 NISSAN INFINITI LT LLC  
 349423 P O BOX 254648  
 M025 SACRAMENTO CA 95865  
 AS43223/5N1AT3BB6WC836892/2021/NISSA/ROGUE SV  
 LINK # 2024-MV-0049514  
 Back Taxes/Bank - M025/DWV CIVLS: 139836-6505866-Y  
 331.98 -165.99 -165.99  
 -165.99 0.00 -165.99  
 331.98 0.00 0.00

2024-03-0349427-00 NISSAN INFINITI LT LLC  
 349427 P O BOX 254648  
 M025 SACRAMENTO CA 95865  
 AS66151/5N1AT3AB2MC832016/2021/NISSA/ROGUE S  
 LINK # 2024-MV-0049515  
 Back Taxes/Bank - M025/DWV CIVLS: 139836-6511932-Y  
 312.40 -260.24 -260.24  
 -260.24 0.00 -260.24  
 312.40 0.00 0.00

2024-03-0349431-00 NISSAN INFINITI LT LLC  
 349431 P O BOX 254648  
 M025 SACRAMENTO CA 95865  
 AT05476/JN1BJB1CW3MM671843/2021/NISSA/ROGUE SP  
 346.50 -231.11 -231.11  
 -231.11 0.00 -231.11  
 346.50 0.00 0.00

349431	M025	P O BOX 254648 SACRAMENTO CA 95865	LINK # 2024-MV-0049516 Back Taxes/Bank - M025/DWV CIVLS: 139836-6541973-Y	-231.11	0.00	-231.11
2024-03-0349433-00		NISSAN INFINITI LT LLC	AT70321/5N1AT3AB4MC844250/2021/NISSA/ROGUE S			
349433	M025	P O BOX 254648 SACRAMENTO CA 95865	LINK # 2024-MV-0049519 Back Taxes/Bank - M025/DWV CIVLS: 139836-6607907-Y	312.40	-182.14	-182.14
2024-03-0349464-00		NISSAN INFINITI LT LLC	AY39365/JN1BJ1AW6MW444732/2021/NISSA/ROGUE SP			
349464	M025	P O BOX 254648 SACRAMENTO CA 95865	LINK # 2024-MV-0049519 Back Taxes/Bank - M025/DWV CIVLS: 139836-6597770-Y	291.72	-145.86	-145.86
2024-03-0349514-00		NISSAN INFINITI LT LLC	BF04309/1N6ED1EK2NN622181/2022/NISSA/FROTTIER			
349514	M025	P O BOX 254648 SACRAMENTO CA 95865	LINK # 2024-MV-0049514 Back Taxes/Bank - M025/DWV CIVLS: 139836-6503991-Y	432.96	-360.65	-360.65
2024-03-0349516-00		NISSAN INFINITI LT LLC	BF05979/JN8AT3DD0MW319528/2021/NISSA/ROGUE PL			
349516	M025	P O BOX 254648 SACRAMENTO CA 95865	LINK # 2024-MV-0049516 Back Taxes/Bank - M025/DWV CIVLS: 139836-6541410-Y	425.48	-177.43	-177.43
2024-03-0349529-00		NISSAN INFINITI LT LLC	BG08429/1N6ED1EK5PN655159/2023/NISSA/FROTTIER			
349529	M025	P O BOX 254648 SACRAMENTO CA 95865	LINK # 2024-MV-0049541 Back Taxes/Bank - M025/DWV CIVLS: 139836-7084333-Y	474.98	-395.65	-395.65
2024-03-0349536-00		NISSAN INFINITI LT LLC	BG29474/JN1BJ1GW4NW471037/2022/NISSA/ROGUE SP			
349536	M025	P O BOX 254648 SACRAMENTO CA 95865	LINK # 2024-MV-0049521 Back Taxes/Bank - M025/DWV CIVLS: 139836-6655538-Y	374.44	-156.13	-156.13
2024-03-0349537-00		NISSAN INFINITI LT LLC	BG46622/3N1CP5BV0NL480911/2022/NISSA/KICKS S			
349537	M025	P O BOX 254648 SACRAMENTO CA 95865	LINK # 2024-MV-0049520 Back Taxes/Bank - M025/DWV CIVLS: 139836-6652067-Y	242.66	-101.20	-101.20
2024-03-0349561-00		NISSAN INFINITI LT LLC	BJ39129/5N1DR3DJ0PC211845/2023/NISSA/PATHTIND			
349561	M025	P O BOX 254648 SACRAMENTO CA 95865	LINK # 2024-MV-0049528 Back Taxes/Bank - M025/DWV CIVLS: 139836-6886324-Y	652.74	-380.56	-380.56
2024-03-0349574-00		NISSAN INFINITI LT LLC	BJ71198/JN8BT3BB4PW464596/2023/NISSA/ROGUE SV			
349574	M025	P O BOX 254648 SACRAMENTO CA 95865	LINK # 2024-MV-0049528 Back Taxes/Bank - M025/DWV CIVLS: 139836-6875003-Y	399.96	-133.19	-133.19
2024-03-0349576-00		NISSAN INFINITI LT LLC	BJ85238/JN8BT3BB2PW468601/2023/NISSA/ROGUE SV			
349576	M025	P O BOX 254648 SACRAMENTO CA 95865	LINK # 2024-MV-0049530 Back Taxes/Bank - M025/DWV CIVLS: 139836-6932499-Y	399.96	-166.78	-166.78
2024-03-0349583-00		NISSAN INFINITI LT LLC	BK32566/JN8BT3BB6PW468603/2023/NISSA/ROGUE SV			
349583	M025	P O BOX 254648 SACRAMENTO CA 95865	LINK # 2024-MV-0049531 Back Taxes/Bank - M025/DWV CIVLS: 139836-6963539-Y	399.96	-33.20	-33.20
				399.96	0.00	0.00

2024-03-0349585-00 NISSAN INFINITI LT LLC BK22636/5N1DR3DJ6PC214894/2023/NISSA/PATHEIND 652.74 -598.55 -598.55  
 349585 P O BOX 254648 LINK # 2024-MV-0049532 -598.55 0.00 -598.55  
 M025 SACRAMENTO CA 95865 Back Taxes/Bank - M025/DMV CIVLS: 139836-6968911-Y 0.00 0.00

2024-03-0349592-00 NISSAN INFINITI LT LLC BK54215/1N4BI4DV9PN365017/2023/NISSA/ALTIMA S 341.44 -227.74 -227.74  
 349592 P O BOX 254648 LINK # 2024-MV-0049534 -227.74 0.00 -227.74  
 M025 SACRAMENTO CA 95865 Back Taxes/Bank - M025/DMV CIVLS: 139836-7001798-Y 0.00 0.00

2024-03-0349597-00 NISSAN INFINITI LT LLC BK54256/1N6ED1CMT7PN635452/2023/NISSA/FRONTIER 459.36 -267.81 -267.81  
 349597 P O BOX 254648 LINK # 2024-MV-0049533 -267.81 0.00 -267.81  
 M025 SACRAMENTO CA 95865 Back Taxes/Bank - M025/DMV CIVLS: 139836-6998263-Y 0.00 0.00

2024-03-0349607-00 NISSAN INFINITI LT LLC BL06989/JN8AY2C05P9691348/2023/NISSA/ARMADA P 912.56 -684.42 -684.42  
 349607 P O BOX 254648 LINK # 2024-MV-0049538 -684.42 0.00 -684.42  
 M025 SACRAMENTO CA 95865 Back Taxes/Bank - M025/DMV CIVLS: 139836-7045136-Y 0.00 0.00

2024-03-0349617-00 NISSAN INFINITI LT LLC BL48336/5N1DR3CD1PC243585/2023/NISSA/PATHEIND 567.16 -378.29 -378.29  
 349617 P O BOX 254648 LINK # 2024-MV-0049540 -378.29 0.00 -378.29  
 M025 SACRAMENTO CA 95865 Back Taxes/Bank - M025/DMV CIVLS: 139836-7075067-Y 0.00 0.00

2024-03-0349652-00 NISSAN INFINITI LT LLC BN26856/JN1BF0A2PM409783/2023/NISSA/ARIYA VE 617.76 -360.16 -360.16  
 349652 P O BOX 254648 LINK # 2024-MV-0049553 -360.16 0.00 -360.16  
 M025 SACRAMENTO CA 95865 Back Taxes/Bank - M025/DMV CIVLS: 139836-7285129-Y 0.00 0.00

2024-03-0349683-00 NISSAN INFINITI LT LLC BP50848/3N1AB8BV9RY308859/2024/NISSA/SENTRA S 286.00 -190.76 -190.76  
 349683 P O BOX 254648 LINK # 2024-MV-0049566 -190.76 0.00 -190.76  
 M025 SACRAMENTO CA 95865 Back Taxes/Bank - M025/DMV CIVLS: 139836-7458207-Y 0.00 0.00

2024-03-0349730-00 NISSAN INFINITI LT LLC PLUGIFY/JN1DF0CD5PM704179/2023/NISSA/ARIYA PL 787.82 -328.53 -328.53  
 349730 P O BOX 254648 LINK # 2024-MV-0049558 -328.53 0.00 -328.53  
 M025 SACRAMENTO CA 95865 Back Taxes/Bank - M025/DMV CIVLS: 139836-7339384-Y 0.00 0.00

# Of Acct (s) : 30 13,507.64 -7,823.84 -7,823.84  
 -7,823.84 0.00 -7,823.84  
 13,507.64 0.00 0.00

**Inquiry Report**      **NORMALK TAX COLLECTOR**      **Interest Date : 12/09/2025**

**Bill#**      **Name**      **Prop Loc/Veh. Info./Plan-Sew**

**Unique\_id**      **Address**      **MBL/LINK #**

**Dist**      **City/State/Zip**      **Flags**

2022-03-0349728-00      NISSAN INFINITI LT LLC      AS32770/5N1AF2MT2JC821804/2018/NISSA/ROGUE S

349728      P O BOX 254648      -429.74      -429.74      0.00      -429.74

M066      SACRAMENTO CA 95865      429.74      0.00      0.00      -429.74

Bank - M066/DWV CIVLS: 139836-5194788-0N

2023-03-0350176-00      NISSAN INFINITI LT LLC      AS32770/5N1AF2MT2JC821804/2018/NISSA/ROGUE S

350176      P O BOX 254648      -355.11      -355.11      0.00      -355.11

M046      SACRAMENTO CA 95865      355.11      0.00      0.00      -355.11

Bank - M046/DWV CIVLS: 139836-5194788-Y

2023-03-0350296-00      NISSAN INFINITI LT LLC      BC18805/1N4BL4CW3MN355668/2021/NISSA/ALTIMA S

350296      P O BOX 254648      -231.48      -231.48      0.00      -231.48

M046      SACRAMENTO CA 95865      555.07      0.00      0.00      -231.48

Bank - M046/DWV CIVLS: 139836-6236637-Y

**# Of Acct (s) : 3**

**TOT Inst**      **Tax Due**      **Balance**

**TOT Adj**      **Int Due**      **Due Now**

**TOT Paid**      **L/F/Bint Due**      **Discount**

DEC 09 2025

Inquiry Report

NORWALK TAX COLLECTOR

Interest Date : 12/15/2025

Page : 1

Bill# Unique\_id Dist Name Address City/State/Zip

Prop Loc/Veh. Info./Plan-Sew MBL/LINK # Flags

TOT Inct TOT AdJ TOT Paid L/F/Bint Due Tax Due Int Due

Balance Due Now Discount

2023-03-0354417-00 PEREZ CRUZ JORGE M 14 SPRING HILL AVE NORWALK CT 06850-3022

BH70440/1FTPX14536NB00157/2006/FORD/F150 LINK # 2023-MV-0032481 Back Taxes/DMV CIVLS: 6903133-4797422-N

136.33 -68.16 136.33 -68.16 0.00 0.00 -68.16 0.00 0.00

2023-03-0354418-00 PEREZ CRUZ JORGE M 14 SPRING HILL AVE NORWALK CT 06850-3022

BH70441/WVWFA71F27V016961/2007/VOIKS/EOS 2.0T LINK # 2023-MV-0032481 Back Taxes/DMV CIVLS: 6903133-6017783-N

96.73 -64.53 96.73 -64.53 0.00 0.00 -64.53 0.00 0.00

2023-03-0354421-00 PEREZ CRUZ JORGE M 14 SPRING HILL AVE NORWALK CT 06850-3022

BM16312/JF1GH61688H810640/2008/SUBAR/IMPRESA LINK # 2023-MV-0032481 Back Taxes/DMV CIVLS: 6903133-7131755-N

121.73 -111.63 121.73 -111.63 0.00 0.00 -111.63 0.00 0.00

2024-03-0353501-00 PEREZ CRUZ JORGE M 14 SPRING HILL AVE NORWALK CT 06850-3022

00ZDDS/JS1VX51L4X2100389/1999/SUZUK/VS1400GL LINK # 2024-MV-0034501 Back Taxes/DMV CIVLS: 6903133-7156013-N

25.52 -19.14 25.52 -19.14 0.00 0.00 -19.14 0.00 0.00

2024-03-0353503-00 PEREZ CRUZ JORGE M 14 SPRING HILL AVE NORWALK CT 06850-3022

BJ71042/JM1BK324071731004/2007/MAZDA/MAZDA3S LINK # 2024-MV-0034501 Back Taxes/DMV CIVLS: 6903133-5947471-N

60.94 -25.41 60.94 -25.41 0.00 0.00 -25.41 0.00 0.00

# Of Acct (s) : 5

441.25 -288.87 441.25 -288.87 0.00 0.00 -288.87 0.00 0.00

353.08

DEC 15 2025

**Inquiry Report**  
 Name: NORMAN TAX COLLECTOR  
 Address: CHANDLER AZ 85226  
 City/State/Zip: CHANDLER AZ 85226

Interest Date: 11/04/2025  
 Prop Loc/Veh. Info./Plan-Seq  
 MBL/Link #  
 P1395

Page: 11  
 Tax Due  
 Int Due  
 Disc Due  
 Balance  
 Days Due  
 Days Past Due

2024-03-0368184-00	TOYOTA LEASE TRUST	3200 WEST RAY ROAD CHANDLER AZ 85226	ANZ0093/41:51:5KRNJ060205/2022/TOYOT/CANRY SE	347.82	-73.51	-174.31
368184	3200 WEST RAY ROAD	CHANDLER AZ 85226	LINK # 2024-NV-0049633	347.82	-73.51	-174.31
M032			Bank - M032/DWV CIVLS: 139809-6620503-Y	-123.91	0.00	-123.91
2024-03-0368479-00	TOYOTA LEASE TRUST	3200 WEST RAY ROAD CHANDLER AZ 85226	HE98463/J2KFE8BX491474654/2021/MAZDA/CX-5 GRA	369.06	-306.59	-306.59
368479	3200 WEST RAY ROAD	CHANDLER AZ 85226	LINK # 2024-NV-0049622	-306.59	0.00	-306.59
M032			Bank - M032/DWV CIVLS: 139809-6492847-Y	368.06	0.00	0.00
2024-03-0368484-00	TOYOTA LEASE TRUST	3200 WEST RAY ROAD CHANDLER AZ 85226	B939488/3KVDNEDLIM311296/2021/MAZDA/CX-30 PR	345.84	-201.63	-201.63
368484	3200 WEST RAY ROAD	CHANDLER AZ 85226	LINK # 2024-NV-0049623	-201.63	0.00	-201.63
M032			Bank - M032/DWV CIVLS: 139809-6496019-Y	345.84	0.00	0.00
2024-03-0368543-00	TOYOTA LEASE TRUST	3200 WEST RAY ROAD CHANDLER AZ 85226	B637186/J1EAAAAMJN3095144/2022/TOYOT/VERIZA LE	448.80	-261.65	-261.65
368543	3200 WEST RAY ROAD	CHANDLER AZ 85226	LINK # 2024-NV-0049634	-261.65	0.00	-261.65
M032			Bank - M032/DWV CIVLS: 139809-6635659-Y	448.80	0.00	0.00
2024-03-0368554-00	TOYOTA LEASE TRUST	3200 WEST RAY ROAD CHANDLER AZ 85226	B656315/3HWZ25N868497117/2022/TOYOT/TACOMA D	439.34	-109.82	-109.82
368554	3200 WEST RAY ROAD	CHANDLER AZ 85226	LINK # 2024-NV-0049637	-109.82	0.00	-109.82
M032			Bank - M032/DWV CIVLS: 139809-6674447-Y	439.34	0.00	0.00
2024-03-0368568-00	TOYOTA LEASE TRUST	3200 WEST RAY ROAD CHANDLER AZ 85226	B68735/JTDEANDERJ057676/2022/TOYOT/CONROL:A	291.28	-72.82	-72.82
368568	3200 WEST RAY ROAD	CHANDLER AZ 85226	LINK # 2024-NV-0049639	-72.82	0.00	-72.82
M032			Bank - M032/DWV CIVLS: 139809-6690827-Y	291.28	0.00	0.00
2024-03-0368573-00	TOYOTA LEASE TRUST	3200 WEST RAY ROAD CHANDLER AZ 85226	B694921/3HWYD8CJ7M41E542/2022/MAZDA/CX-30 PR	340.56	-227.15	-227.15
368573	3200 WEST RAY ROAD	CHANDLER AZ 85226	LINK # 2024-NV-0049639	-227.15	0.00	-227.15
M032			Bank - M032/DWV CIVLS: 139809-6706201-Y	340.56	0.00	0.00
<b>LOF Acct (#) : 7</b>				<b>2,581.70</b>	<b>-1,353.57</b>	<b>-1,353.57</b>
				<b>-1,353.57</b>	<b>0.00</b>	<b>-1,353.57</b>
				<b>2,581.70</b>	<b>0.00</b>	<b>0.00</b>

Ryan recieved 11/17/2025

NOV 04 2025

**Inquiry Report**  
**Normal Tax Collector**

Name  
 Address  
 City/State/Zip

Interest Date : 07/25/2025  
 Prop Loc/Veh. Info./Plan-Sew  
 MBL/LINK #  
 Flags

Page : 1  
 Tax Due  
 Int Due  
 Balance Due How  
 Discount

2024-03-0368220-00 TOYOTA LEASE TRUST  
 368220 3200 WEST RAY ROAD  
 M032 CHANDLER AZ 85226

AL36388/JTMD6RFV0MD009402/2021/TOYOT/RAV4 LIM  
 LINK # 2024-NV-0049613  
 Bank - M032/DWV CIVLS: 139809-6021918-Y

427.68 -427.68  
 TOT Inst 427.68  
 TOT Adj 0.00  
 TOT Paid 0.00

2024-03-0368248-00 TOYOTA LEASE TRUST  
 368248 3200 WEST RAY ROAD  
 M032 CHANDLER AZ 85226

AS03195/JTMA3FVFRD179754/2024/TOYOT/RAV4 PRI  
 LINK # 2024-NV-0049695  
 Bank - M032/DWV CIVLS: 139809-7380636-Y

602.14 -602.14  
 TOT Inst 602.14  
 TOT Adj 0.00  
 TOT Paid 0.00

2024-03-0368272-00 TOYOTA LEASE TRUST  
 368272 3200 WEST RAY ROAD  
 M032 CHANDLER AZ 85226

AU09533/JM3KFEEMIN1560455/2022/MAZDA/CX-5 PRE  
 LINK # 2024-NV-0049637  
 Bank - M032/DWV CIVLS: 139809-6667208-Y

418.22 -139.26  
 TOT Inst 418.22  
 TOT Adj 0.00  
 TOT Paid 0.00

2024-03-0368273-00 TOYOTA LEASE TRUST  
 368273 3200 WEST RAY ROAD  
 M032 CHANDLER AZ 85226

AU54081/JTHP9UBH3M2061074/2022/LEXUS/UX 250H  
 LINK # 2024-NV-0049634  
 Bank - M032/DWV CIVLS: 139809-6633385-Y

456.28 -228.14  
 TOT Inst 456.28  
 TOT Adj 0.00  
 TOT Paid 0.00

2024-03-0368310-00 TOYOTA LEASE TRUST  
 368310 3200 WEST RAY ROAD  
 M032 CHANDLER AZ 85226

AX34039/4T1G11AKILLU303752/2020/TOYOT/CAMRY SE  
 LINK # 2024-NV-0049612  
 Bank - M032/DWV CIVLS: 139809-5771340-Y

280.72 -280.72  
 TOT Inst 280.72  
 TOT Adj 0.00  
 TOT Paid 0.00

2024-03-0368331-00 TOYOTA LEASE TRUST  
 368331 3200 WEST RAY ROAD  
 M032 CHANDLER AZ 85226

AY67672/5TDPEZRBH7LS030394/2020/TOYOT/HIGHLAND  
 LINK # 2024-NV-0049613  
 Bank - M032/DWV CIVLS: 139809-5901041-Y

526.02 -526.02  
 TOT Inst 526.02  
 TOT Adj 0.00  
 TOT Paid 0.00

2024-03-0368338-00 TOYOTA LEASE TRUST  
 368338 3200 WEST RAY ROAD  
 M032 CHANDLER AZ 85226

AZ09881/JM3KFBDM9L0835672/2020/MAZDA/CX-5 GRA  
 LINK # 2024-NV-0049613  
 Bank - M032/DWV CIVLS: 139809-5992211-Y

340.78 -340.78  
 TOT Inst 340.78  
 TOT Adj 0.00  
 TOT Paid 0.00

2024-03-0368405-00 TOYOTA LEASE TRUST  
 368405 3200 WEST RAY ROAD  
 M032 CHANDLER AZ 85226

BC64353/JTJDARDZ9M2254017/2021/LEXUS/NX 300 B  
 LINK # 2024-NV-0049617  
 Bank - M032/DWV CIVLS: 139809-6307761-Y

449.46 -449.46  
 TOT Inst 449.46  
 TOT Adj 0.00  
 TOT Paid 0.00

2024-03-0368414-00 TOYOTA LEASE TRUST  
 368414 3200 WEST RAY ROAD  
 M032 CHANDLER AZ 85226

BD23668/JTHG2IEZ5M5021969/2021/LEXUS/IS 350 F  
 LINK # 2024-NV-0049618  
 Bank - M032/DWV CIVLS: 139809-6362000-Y

518.54 -518.54  
 TOT Inst 518.54  
 TOT Adj 0.00  
 TOT Paid 0.00

2024-03-0368454-00 TOYOTA LEASE TRUST  
 368454 3200 WEST RAY ROAD  
 M032 CHANDLER AZ 85226

BE39444/JM3TCBDY9M0536443/2021/MAZDA/CX-9 GRA  
 LINK # 2024-NV-0049620  
 Bank - M032/DWV CIVLS: 139809-6457554-Y

506.44 -506.44  
 TOT Inst 506.44  
 TOT Adj 0.00  
 TOT Paid 0.00

2024-03-0368530-00 TOYOTA LEASE TRUST  
 368530 3200 WEST RAY ROAD  
 M032 CHANDLER AZ 85226

BC06699/JTHDZ5BN6NM129314/2022/TOYOT/TACOMA D  
 LINK # 2024-NV-0049634  
 Bank - M032/DWV CIVLS: 139809-6627879-Y

439.34 -256.15  
 TOT Inst 439.34  
 TOT Adj 0.00  
 TOT Paid 0.00

2024-03-0368612-00 TOYOTA LEASE TRUST  
 368612 3200 WEST RAY ROAD  
 M032 CHANDLER AZ 85226

BH81939/JMVDHBDL3MH445745/2022/MAZDA/CX-30 PR  
 LINK # 2024-NV-0049641  
 Bank - M032/DWV CIVLS: 139809-6801764-Y

375.76 -62.74  
 TOT Inst 375.76  
 TOT Adj 0.00  
 TOT Paid 0.00

\*2024-03-0368768-00 TOYOTA LEASE TRUST  
 368768 3200 WEST RAY ROAD  
 M032 CHANDLER AZ 85226

BH43475/JTHMB3FV3FD162535/2023/TOYOT/RAV4 PRI

375.76 -62.74  
 TOT Inst 375.76  
 TOT Adj 0.00  
 TOT Paid 0.00

375.76 -62.74  
 TOT Inst 375.76  
 TOT Adj 0.00  
 TOT Paid 0.00

375.76 -62.74  
 TOT Inst 375.76  
 TOT Adj 0.00  
 TOT Paid 0.00

375.76 -62.74  
 TOT Inst 375.76  
 TOT Adj 0.00  
 TOT Paid 0.00

375.76 -62.74  
 TOT Inst 375.76  
 TOT Adj 0.00  
 TOT Paid 0.00

375.76 -62.74  
 TOT Inst 375.76  
 TOT Adj 0.00  
 TOT Paid 0.00

368768	3200 WEST RAY ROAD	LINK # 2024-NV-0049683	595.10	-515.71	-515.71
MO32	CHANDLER AZ 85226	Bank - MO32/DNV CIVLS: 139809-7242545-y	-545.71	0.00	-545.71
			595.10	0.00	0.00
2024-03-0368940-00	TOYOTA LEASE TRUST	CPUCCL/3M2BPBM2MM209594/2021/MAZDA/3 SELECT			
368940	3200 WEST RAY ROAD	LINK # 2024-NV-0049616	278.30	-278.30	-278.30
MO32	CHANDLER AZ 85226	Bank - MO32/DNV CIVLS: 139809-6192112-y	-278.30	0.00	-278.30
			278.30	0.00	0.00
# OF Acct (*) : 14			6,214.78	-5,162.08	-5,162.08
			-5,162.08	0.00	-5,162.08
			6,214.78	0.00	0.00



**Inquiry Report**  
**NORMALK TAX COLLECTOR**

Interest Date : 11/04/2025

Page : 1

Bill#	Name	Prop Loc/Veh. Info./Plan-Sew	TOT Inst	Tax Due	Balance
Unique_id	Address	MBL/LINK #	TOT Adj	Int Due	Due Now
Dist	City/State/zip	Flags	TOT Paid	L/F/Bint Due	Discount

2024-03-0370960-00	VAULT TRUST	BB42304/1C4HJXEN4MM670070/2021/JEEP/WRANGLER	446.38	-148.65	-148.65
370960	500 WOODWARD AVE	LINK # 2024-MV-0049736	-148.65	0.00	-148.65
M034	DETROIT MI 48226	Bank - M034/DWV CIVLS: 115263-6186658-Y	446.38	0.00	0.00

2024-03-0370961-00	VAULT TRUST	BB42399/1C6JTTG5ML543154/2021/JEEP/GLADIATO	506.66	-168.72	-168.72
370961	500 WOODWARD AVE	LINK # 2024-MV-0049736	-168.72	0.00	-168.72
M034	DETROIT MI 48226	Bank - M034/DWV CIVLS: 115263-6204368-Y	506.66	0.00	0.00

2024-03-0370964-00	VAULT TRUST	BC07300/JAATWAA9NZ001280/2022/MITSU/ECLIPSE	341.88	-170.94	-170.94
370964	500 WOODWARD AVE	LINK # 2024-MV-0049737	-170.94	0.00	-170.94
M034	DETROIT MI 48226	Bank - M034/DWV CIVLS: 115263-6246886-Y	341.88	0.00	0.00

2024-03-0370979-00	VAULT TRUST	BC71688/ZARFANAN5M7648483/2021/ALFA/GIULIA S	478.72	-239.36	-239.36
370979	500 WOODWARD AVE	LINK # 2024-MV-0049739	-239.36	0.00	-239.36
M034	DETROIT MI 48226	Bank - M034/DWV CIVLS: 115263-6448529-Y	478.72	0.00	0.00

2024-03-0370997-00	VAULT TRUST	BE88652/5NMS3DAJ5NH406488/2022/HYUND/SANTA FE	449.24	-37.29	-37.29
370997	500 WOODWARD AVE	LINK # 2024-MV-0049740	-37.29	0.00	-37.29
M034	DETROIT MI 48226	Bank - M034/DWV CIVLS: 115263-6499854-Y	449.24	0.00	0.00

2024-03-0371003-00	VAULT TRUST	BF48224/1C4RJFBG4MC875118/2021/JEEP/GRAND CH	486.86	-203.02	-203.02
371003	500 WOODWARD AVE	LINK # 2024-MV-0049741	-203.02	0.00	-203.02
M034	DETROIT MI 48226	Bank - M034/DWV CIVLS: 115263-6532904-Y	486.86	0.00	0.00

2024-03-0371012-00	VAULT TRUST	BF67527/5NMJCCAE9NH084883/2022/HYUND/TUCSON S	396.66	-132.09	-132.09
371012	500 WOODWARD AVE	LINK # 2024-MV-0049742	-132.09	0.00	-132.09
M034	DETROIT MI 48226	Bank - M034/DWV CIVLS: 115263-6559614-Y	396.66	0.00	0.00

2024-03-0371021-00	VAULT TRUST	BG20299/1C4RJKA5N8542103/2022/JEEP/GRAND CH	503.80	-167.77	-167.77
371021	500 WOODWARD AVE	LINK # 2024-MV-0049745	-167.77	0.00	-167.77
M034	DETROIT MI 48226	Bank - M034/DWV CIVLS: 115263-6655292-Y	503.80	0.00	0.00

2024-03-0371028-00	VAULT TRUST	BG84842/3VV2B7AX7MM070317/2022/VOLKS/TIGUAN S	381.92	-159.26	-159.26
371028	500 WOODWARD AVE	LINK # 2024-MV-0049745	-159.26	0.00	-159.26
M034	DETROIT MI 48226	Bank - M034/DWV CIVLS: 115263-6698401-Y	381.92	0.00	0.00

2024-03-0371080-00	VAULT TRUST	BM15021/1C4RJKA5N8542103/2023/JEEP/GRAND CH	784.30	-65.10	-65.10
371080	500 WOODWARD AVE	LINK # 2024-MV-0049753	-65.10	0.00	-65.10
M034	DETROIT MI 48226	Bank - M034/DWV CIVLS: 115263-7170417-Y	784.30	0.00	0.00

# OF Acct (s) : 10

4,776.42	-1,492.20	-1,492.20
-1,492.20	0.00	-1,492.20
4,776.42	0.00	0.00

NOV 04 2025

**Inquiry Report**      **NORMALK TAX COLLECTOR**  
 Bill#      Name  
 Unique\_id      Address  
 Dist      City/State/Zip

Interest Date : 12/04/2025  
 Prop Loc/Veh.Info./Plan-Sew  
 MBL/LINK #  
 Flags

**DEC 04 2025**

Page : 1  
 Tax Due      Balance  
 Int Due      Due Now  
 TOT Paid      L/F/Bint Due      Discount

2023-03-0369003-00	TOYOTA LEASE TRUST	0ALHP0/JTMR6REV7MD015820/2021/TOYOT/RAV4 XLE	739.11	-61.35	0.00	-61.35
369003	3200 WEST RAY ROAD	LINK # 2023-WV-0046569	-61.35	0.00		-61.35
M087	CHANDLER AZ 85226	Back Taxes/Bank - M087/DMV CIVLS: 139809-6067847-Y	739.11	0.00		0.00
2023-03-0369031-00	TOYOTA LEASE TRUST	3ALNT1/4T1T1BK2MU025958/2021/TOYOT/CAMRY SE	586.88	-244.72		-244.72
369031	3200 WEST RAY ROAD	LINK # 2023-WV-0046572	-244.72	0.00		-244.72
M087	CHANDLER AZ 85226	Back Taxes/Bank - M087/DMV CIVLS: 139809-6131899-Y	586.88	0.00		0.00
2023-03-0369041-00	TOYOTA LEASE TRUST	483ZLT/JTMP1RFVXMD078562/2021/TOYOT/RAV4 XLE	693.02	-462.23		-462.23
369041	3200 WEST RAY ROAD	LINK # 2023-WV-0046573	-462.23	0.00		-462.23
M087	CHANDLER AZ 85226	Back Taxes/Bank - M087/DMV CIVLS: 139809-6116863-Y	693.02	0.00		0.00
2023-03-0369056-00	TOYOTA LEASE TRUST	6AHS26/2T3F1RFV5MC193165/2021/TOYOT/RAV4 LE	631.67	-421.33		-421.33
369056	3200 WEST RAY ROAD	LINK # 2023-WV-0046574	-421.33	0.00		-421.33
M087	CHANDLER AZ 85226	Back Taxes/Bank - M087/DMV CIVLS: 139809-6175845-Y	631.67	0.00		0.00
2023-03-0369063-00	TOYOTA LEASE TRUST	727YVE/4T1K1BK0NU050159/2022/TOYOT/CAMRY XS	794.30	-463.08		-463.08
369063	3200 WEST RAY ROAD	LINK # 2023-WV-0046575	-463.08	0.00		-463.08
M087	CHANDLER AZ 85226	Back Taxes/Bank - M087/DMV CIVLS: 139809-6475538-Y	794.30	0.00		0.00
2023-03-0369089-00	TOYOTA LEASE TRUST	9AERT4/4T1C1LAK1LU902763/2020/TOYOT/CAMRY LE	489.17	-81.70		-81.70
369089	3200 WEST RAY ROAD	LINK # 2023-WV-0046577	-81.70	0.00		-81.70
M087	CHANDLER AZ 85226	Back Taxes/Bank - M087/DMV CIVLS: 139809-5786666-Y	489.17	0.00		0.00
2023-03-0369101-00	TOYOTA LEASE TRUST	AC13880/5TDHZRBH6MS123868/2021/TOYOT/HIGHLAND	845.91	-281.69		-281.69
369101	3200 WEST RAY ROAD	LINK # 2023-WV-0046579	-281.69	0.00		-281.69
M087	CHANDLER AZ 85226	Back Taxes/Bank - M087/DMV CIVLS: 139809-6321245-Y	845.91	0.00		0.00
2023-03-0369118-00	TOYOTA LEASE TRUST	AF00584/JTJBARB2K2209159/2019/LEXUS/NX 300	648.88	-108.36		-108.36
369118	3200 WEST RAY ROAD	LINK # 2023-WV-0046580	-108.36	0.00		-108.36
M087	CHANDLER AZ 85226	Back Taxes/Bank - M087/DMV CIVLS: 139809-5388344-Y	648.88	0.00		0.00
2023-03-0369139-00	TOYOTA LEASE TRUST	AH57166/2T3F1RFV7WC155467/2021/TOYOT/RAV4 LE	631.67	-52.42		-52.42
369139	3200 WEST RAY ROAD	LINK # 2023-WV-0046582	-52.42	0.00		-52.42
M087	CHANDLER AZ 85226	Back Taxes/Bank - M087/DMV CIVLS: 139809-6042067-Y	631.67	0.00		0.00
2023-03-0369142-00	TOYOTA LEASE TRUST	AH75127/JTHC81D2XK5035303/2019/LEXUS/IS 300	695.29	-405.36		-405.36
369142	3200 WEST RAY ROAD	LINK # 2023-WV-0046583	-405.36	0.00		-405.36
M087	CHANDLER AZ 85226	Back Taxes/Bank - M087/DMV CIVLS: 139809-5740727-Y	695.29	0.00		0.00
2023-03-0369143-00	TOYOTA LEASE TRUST	AH75149/JTJDARD21L5012609/2020/LEXUS/NX	723.86	-482.81		-482.81
369143	3200 WEST RAY ROAD	LINK # 2023-WV-0046583	-482.81	0.00		-482.81
M087	CHANDLER AZ 85226	Back Taxes/Bank - M087/DMV CIVLS: 139809-5744917-Y	723.86	0.00		0.00

**Inquiry Report**

NORWALK TAX COLLECTOR  
 Name  
 Address  
 City/State/Zip

Interest Date : 12/04/2025  
 Prop Loc/Veh. Info./Plan-Sew  
 MBL/LINK #  
 Flags

Page : 2  
 Tax Due  
 Int Due  
 Balance Due Now  
 TOT Inst  
 TOT Adj  
 TOT Paid  
 L/F/B/Int Due  
 Discount

2023-03-0369172-00 TOYOTA LEASE TRUST AL85284/STDGZRBHIMS063364/2021/TOYOT/HIGHLAND 829.35 -207.32 -207.32  
 369172 3200 WEST RAY ROAD LINK # 2023-WV-0046586 -207.32 0.00 -207.32  
 M087 CHANDLER AZ 85226 Back Taxes/Bank - M087/DWV CIVLS: 139809-6023488-X 829.35 0.00 0.00

2023-03-0369174-00 TOYOTA LEASE TRUST AM06027/JTDT4MCEXMJ065003/2021/TOYOT/COROLLA 550.52 -412.89 -412.89  
 369174 3200 WEST RAY ROAD LINK # 2023-WV-0046586 -412.89 0.00 -412.89  
 M087 CHANDLER AZ 85226 Back Taxes/Bank - M087/DWV CIVLS: 139809-6053088-Y 550.52 0.00 0.00

2023-03-0369178-00 TOYOTA LEASE TRUST AM20256/58AGI1D15MU004178/2021/LEXUS/ES 250 B 860.19 -143.64 -143.64  
 369178 3200 WEST RAY ROAD LINK # 2023-WV-0046586 -143.64 0.00 -143.64  
 M087 CHANDLER AZ 85226 Back Taxes/Bank - M087/DWV CIVLS: 139809-6111444-Y 860.19 0.00 0.00

2023-03-0369183-00 TOYOTA LEASE TRUST AM52726/JTDEPMAE9MJ129521/2021/TOYOT/COROLLA 462.88 -385.59 -385.59  
 369183 3200 WEST RAY ROAD LINK # 2023-WV-0046587 -385.59 0.00 -385.59  
 M087 CHANDLER AZ 85226 Back Taxes/Bank - M087/DWV CIVLS: 139809-6017274-Y 462.88 0.00 0.00

2023-03-0369199-00 TOYOTA LEASE TRUST AN85713/STDYSKFC6MS021724/2021/TOYOT/SIENNA X 1,021.52 -340.18 -340.18  
 369199 3200 WEST RAY ROAD LINK # 2023-WV-0046588 -340.18 0.00 -340.18  
 M087 CHANDLER AZ 85226 Back Taxes/Bank - M087/DWV CIVLS: 139809-6262041-Y 1,021.52 0.00 0.00

2023-03-0369215-00 TOYOTA LEASE TRUST AR52632/2T3D6RFV7MM021842/2021/TOYOT/RAV4 LIM 924.79 -462.40 -462.40  
 369215 3200 WEST RAY ROAD LINK # 2023-WV-0046590 -462.40 0.00 -462.40  
 M087 CHANDLER AZ 85226 Back Taxes/Bank - M087/DWV CIVLS: 139809-6182810-Y 924.79 0.00 0.00

2023-03-0369232-00 TOYOTA LEASE TRUST AS47823/2T3G1RFV8MC168460/2021/TOYOT/RAV4 LE 635.24 -582.52 -582.52  
 369232 3200 WEST RAY ROAD LINK # 2023-WV-0046592 -582.52 0.00 -582.52  
 M087 CHANDLER AZ 85226 Back Taxes/Bank - M087/DWV CIVLS: 139809-6093917-Y 635.24 0.00 0.00

2023-03-0369234-00 TOYOTA LEASE TRUST AS56834/5TDKSKFCXMS019688/2021/TOYOT/SIENNA L 911.80 -227.93 -227.93  
 369234 3200 WEST RAY ROAD LINK # 2023-WV-0046592 -227.93 0.00 -227.93  
 M087 CHANDLER AZ 85226 Back Taxes/Bank - M087/DWV CIVLS: 139809-6274645-Y 911.80 0.00 0.00

2023-03-0369239-00 TOYOTA LEASE TRUST AT00093/JTMAB3FV1MD044302/2021/TOYOT/RAV4 PRI 800.46 -400.23 -400.23  
 369239 3200 WEST RAY ROAD LINK # 2023-WV-0046592 -400.23 0.00 -400.23  
 M087 CHANDLER AZ 85226 Back Taxes/Bank - M087/DWV CIVLS: 139809-6371223-Y 800.46 0.00 0.00

2023-03-0369268-00 TOYOTA LEASE TRUST AV40482/JTHR9JBH5M2048155/2021/LEXUS/UX 250H 833.90 -69.21 -69.21  
 369268 3200 WEST RAY ROAD LINK # 2023-WV-0046595 -69.21 0.00 -69.21  
 M087 CHANDLER AZ 85226 Back Taxes/Bank - M087/DWV CIVLS: 139809-6344649-Y 833.90 0.00 0.00

2023-03-0369286-00 TOYOTA LEASE TRUST AM77161/2T2HZMDA9MC287834/2021/LEXUS/RX 350 958.22 -399.58 -399.58

**Inquiry Report**  
 NORWALK TAX COLLECTOR  
 Name  
 Address  
 City/State/Zip

Interest Date : 12/04/2025  
 Prop Loc/Veh. Info./Plan-Sew  
 MBL/LINK #  
 Plags

Page : 3  
 Tax Due  
 Int Due  
 Due Now  
 Balance  
 Due Now  
 Discount

369286 M087 3200 WEST RAY ROAD CHANDLER AZ 85226  
 LINK # 2023-MV-0046597  
 Back Taxes/Bank - M087/DWV CIVLS: 139809-6198820-Y  
 958.22 0.00 -399.58 0.00 -399.58

2023-03-0369296-00 TOYOTA LEASE TRUST  
 369296 M087 3200 WEST RAY ROAD CHANDLER AZ 85226  
 AX27066/2T2SZMDA5LC226856/2020/LEXUS/RX 350 F  
 LINK # 2023-MV-0046598  
 Back Taxes/Bank - M087/DWV CIVLS: 139809-5761839-Y  
 910.18 -530.63 -330.63 0.00 -530.63  
 530.63 0.00 -530.63 0.00 -530.63  
 910.18 0.00 0.00 0.00 0.00

2023-03-0369307-00 TOYOTA LEASE TRUST  
 369307 M087 3200 WEST RAY ROAD CHANDLER AZ 85226  
 AY12232/5YFP4MCE8MP065062/2021/TOYOT/COROLLA  
 LINK # 2023-MV-0046599  
 Back Taxes/Bank - M087/DWV CIVLS: 139809-6297169-Y  
 537.86 -134.45 -134.45 0.00 -134.45  
 537.86 0.00 -134.45 0.00 -134.45

2023-03-0369331-00 TOYOTA LEASE TRUST  
 369331 M087 3200 WEST RAY ROAD CHANDLER AZ 85226  
 AZ11611/3MVDMBCL9LMI34609/2020/MAZDA/CX-30 SE  
 LINK # 2023-MV-0046602  
 Back Taxes/Bank - M087/DWV CIVLS: 139809-5931250-Y  
 504.43 -41.87 -41.87 0.00 -41.87  
 504.43 0.00 -41.87 0.00 -41.87

2023-03-0369335-00 TOYOTA LEASE TRUST  
 369335 M087 3200 WEST RAY ROAD CHANDLER AZ 85226  
 AZ14457/2T3RWRV01W089856/2020/TOYOT/RAV4 XLE  
 LINK # 2023-MV-0046602  
 Back Taxes/Bank - M087/DWV CIVLS: 139809-5973716-Y  
 695.94 -290.19 -290.19 0.00 -290.19  
 695.94 0.00 -290.19 0.00 -290.19

2023-03-0369346-00 TOYOTA LEASE TRUST  
 369346 M087 3200 WEST RAY ROAD CHANDLER AZ 85226  
 AZ291592/2T3PIRFV8MC148435/2021/TOYOT/RAV4 XLE  
 LINK # 2023-MV-0046603  
 Back Taxes/Bank - M087/DWV CIVLS: 139809-6014891-Y  
 693.02 -519.75 -519.75 0.00 -519.75  
 693.02 0.00 -519.75 0.00 -519.75

2023-03-0369350-00 TOYOTA LEASE TRUST  
 369350 M087 3200 WEST RAY ROAD CHANDLER AZ 85226  
 A298781/2T3FIRFV6MC202407/2021/TOYOT/RAV4 LE  
 LINK # 2023-MV-0046603  
 Back Taxes/Bank - M087/DWV CIVLS: 139809-6225798-Y  
 631.67 -210.34 -210.34 0.00 -210.34  
 631.67 0.00 -210.34 0.00 -210.34

2023-03-0369353-00 TOYOTA LEASE TRUST  
 369353 M087 3200 WEST RAY ROAD CHANDLER AZ 85226  
 BA04460/JM3KFBDM7M0301992/2021/MAZDA/CX-5 GRA  
 LINK # 2023-MV-0046604  
 Back Taxes/Bank - M087/DWV CIVLS: 139809-6015254-Y  
 627.13 -470.35 -470.35 0.00 -470.35  
 627.13 0.00 -470.35 0.00 -470.35

2023-03-0369380-00 TOYOTA LEASE TRUST  
 369380 M087 3200 WEST RAY ROAD CHANDLER AZ 85226  
 BA70680/2T3A1RFV5MC161861/2021/TOYOT/RAV4 XLE  
 LINK # 2023-MV-0046606  
 Back Taxes/Bank - M087/DWV CIVLS: 139809-6076669-Y  
 758.91 -316.45 -316.45 0.00 -316.45  
 758.91 0.00 -316.45 0.00 -316.45

2023-03-0369429-00 TOYOTA LEASE TRUST  
 369429 M087 3200 WEST RAY ROAD CHANDLER AZ 85226  
 BB43470/JTDKAMFPM3168433/2021/TOYOT/PRIUS PR  
 LINK # 2023-MV-0046611  
 Back Taxes/Bank - M087/DWV CIVLS: 139809-6192742-Y  
 635.57 -265.04 -265.04 0.00 -265.04  
 635.57 0.00 -265.04 0.00 -265.04

2023-03-0369457-00 TOYOTA LEASE TRUST  
 369457 3200 WEST RAY ROAD  
 BB90641/JTDEAMDE4MJ028254/2021/TOYOT/COROLLA  
 LINK # 2023-MV-0046614  
 543.06 -135.75 -135.75 0.00 -135.75  
 543.06 0.00 -135.75 0.00 -135.75

**Inquiry Report**

NORWALK TAX COLLECTOR

Interest Date : 12/04/2025

Page : 4

Bill #  
Unique\_id  
Dist

Name  
Address  
City/State/Zip

Prop Loc/Veh. Info./Plan-Sew  
MBL/LINK #  
Flags

TOT Inst  
TOT Adj  
TOT Paid

Tax Due  
Int Due  
L/F/Bint Due

Balance  
Due Now  
Discount

2023-03-0369468-00 TOYOTA LEASE TRUST CHANDLER AZ 85226 BC06322/JTDEAMDE0MJ028512/2021/TOYOT/COROLLA 543.06 -180.84 -180.84 0.00 0.00

2023-03-0369468-00 TOYOTA LEASE TRUST CHANDLER AZ 85226 LINK # 2023-MW-0046615 543.06 -180.84 -180.84 0.00 0.00  
Back Taxes/Bank - M087/DWV CIVLS: 139809-6267415-Y

2023-03-0369471-00 TOYOTA LEASE TRUST CHANDLER AZ 85226 BC09373/JM3KFBGM3M1365538/2021/MAZDA/CX-5 TOU 591.42 -246.63 -246.63 0.00 0.00  
LINK # 2023-MW-0046616 591.42 -246.63 -246.63 0.00 0.00  
Back Taxes/Bank - M087/DWV CIVLS: 139809-6215453-Y

2023-03-0369477-00 TOYOTA LEASE TRUST CHANDLER AZ 85226 BC16231/JTJAM7BX9M5292619/2021/LEXUS/GX 460 1,099.74 -274.93 -274.93 0.00 0.00  
LINK # 2023-MW-0046616 1,099.74 -274.93 -274.93 0.00 0.00  
Back Taxes/Bank - M087/DWV CIVLS: 139809-6286219-Y

2023-03-0369483-00 TOYOTA LEASE TRUST CHANDLER AZ 85226 BC32044/4TIG1AK9MU568050/2021/TOYOT/CAMRY SE 555.07 -138.77 -138.77 0.00 0.00  
LINK # 2023-MW-0046617 555.07 -138.77 -138.77 0.00 0.00  
Back Taxes/Bank - M087/DWV CIVLS: 139809-6235200-Y

2023-03-0369484-00 TOYOTA LEASE TRUST CHANDLER AZ 85226 BC56092/JTJDARD28M2250878/2021/LEXUS/NX 300 B 766.38 -63.62 -63.62 0.00 0.00  
LINK # 2023-MW-0046617 766.38 -63.62 -63.62 0.00 0.00  
Back Taxes/Bank - M087/DWV CIVLS: 139809-6264789-Y

2023-03-0369485-00 TOYOTA LEASE TRUST CHANDLER AZ 85226 BC58810/JM3KFBM3M1334453/2021/MAZDA/CX-5 SPO 567.08 -188.86 -188.86 0.00 0.00  
LINK # 2023-MW-0046617 567.08 -188.86 -188.86 0.00 0.00  
Back Taxes/Bank - M087/DWV CIVLS: 139809-6259134-Y

2023-03-0369494-00 TOYOTA LEASE TRUST CHANDLER AZ 85226 BC64354/58AD2B1XWU102993/2021/LEXUS/ES 350 828.38 -207.10 -207.10 0.00 0.00  
LINK # 2023-MW-0046618 828.38 -207.10 -207.10 0.00 0.00  
Back Taxes/Bank - M087/DWV CIVLS: 139809-6308803-Y

2023-03-0369510-00 TOYOTA LEASE TRUST CHANDLER AZ 85226 BD17001/5YFP4MCEXMP093557/2021/TOYOT/COROLLA 537.86 -134.45 -134.45 0.00 0.00  
LINK # 2023-MW-0046619 537.86 -134.45 -134.45 0.00 0.00  
Back Taxes/Bank - M087/DWV CIVLS: 139809-6347332-Y

2023-03-0369512-00 TOYOTA LEASE TRUST CHANDLER AZ 85226 BD17034/2T3G1RFV2MW220583/2021/TOYOT/RAV4 LE 635.24 -158.79 -158.79 0.00 0.00  
LINK # 2023-MW-0046620 635.24 -158.79 -158.79 0.00 0.00  
Back Taxes/Bank - M087/DWV CIVLS: 139809-6363182-Y

2023-03-0369532-00 TOYOTA LEASE TRUST CHANDLER AZ 85226 BD41139/5TDGZRBH9MS140546/2021/TOYOT/HIGHLAND 829.35 -138.50 -138.50 0.00 0.00  
LINK # 2023-MW-0046622 829.35 -138.50 -138.50 0.00 0.00  
Back Taxes/Bank - M087/DWV CIVLS: 139809-6367889-Y

2023-03-0369537-00	TOYOTA LEASE TRUST	BD43246/4T1T11BK5M0043760/2021/TOYOT/CAMRY SE	586.88	-195.44	-195.44
369537	3200 WEST RAY ROAD	LINK # 2023-MV-0046622	-195.44	0.00	-195.44
M087	CHANDLER AZ 85226	Back Taxes/Bank - M087/DMV CIVLS: 139809-6355852-X	586.88	0.00	0.00
2023-03-0369545-00	TOYOTA LEASE TRUST	BD61783/JTME6RFV7MJ007572/2021/TOYOT/RAV4 XSE	893.62	-149.25	-149.25
369545	3200 WEST RAY ROAD	LINK # 2023-MV-0046623	-149.25	0.00	-149.25
M087	CHANDLER AZ 85226	Back Taxes/Bank - M087/DMV CIVLS: 139809-6393657-Y	893.62	0.00	0.00
2023-03-0369567-00	TOYOTA LEASE TRUST	BD91715/JTJH2KFA4M2034261/2021/LEXUS/RX 350 L	1,036.12	-85.98	-85.98
369567	3200 WEST RAY ROAD	LINK # 2023-MV-0046625	-85.98	0.00	-85.98
M087	CHANDLER AZ 85226	Back Taxes/Bank - M087/DMV CIVLS: 139809-6412067-Y	1,036.12	0.00	0.00
2023-03-0369801-00	TOYOTA LEASE TRUST	BJ73157/4T1C11AK1PUI09520/2023/TOYOT/CAMRY LE	642.38	-267.86	-267.86
369801	3200 WEST RAY ROAD	LINK # 2023-MV-0046649	-267.86	0.00	-267.86
M087	CHANDLER AZ 85226	Back Taxes/Bank - M087/DMV CIVLS: 139809-6882768-X	642.38	0.00	0.00
2023-03-0369838-00	TOYOTA LEASE TRUST	BK45889/2T2GCEZ0PC031313/2023/LEXUS/NX 350	1,031.90	-688.28	-688.28
369838	3200 WEST RAY ROAD	LINK # 2023-MV-0046652	-688.28	0.00	-688.28
M087	CHANDLER AZ 85226	Back Taxes/Bank - M087/DMV CIVLS: 139809-7005170-Y	1,031.90	0.00	0.00
2023-03-0369846-00	TOYOTA LEASE TRUST	BK69614/3TYC25AN8MT025410/2021/TOYOT/TACOMA D	865.71	-288.28	-288.28
369846	3200 WEST RAY ROAD	LINK # 2023-MV-0046653	-288.28	0.00	-288.28
M087	CHANDLER AZ 85226	Back Taxes/Bank - M087/DMV CIVLS: 139809-6991877-Y	865.71	0.00	0.00
2023-03-0369944-00	TOYOTA LEASE TRUST	PEEV1/JTJGAR029L2221403/2020/LEXUS/NX	729.38	-607.59	-607.59
369944	3200 WEST RAY ROAD	LINK # 2023-MV-0046663	-607.59	0.00	-607.59
M087	CHANDLER AZ 85226	Back Taxes/Bank - M087/DMV CIVLS: 139809-5639804-Y	729.38	0.00	0.00
2023-03-0369945-00	TOYOTA LEASE TRUST	PEEV4/JTHC81P20M5047136/2021/LEXUS/IS 300	831.63	-138.90	-138.90
369945	3200 WEST RAY ROAD	LINK # 2023-MV-0046663	-138.90	0.00	-138.90
M087	CHANDLER AZ 85226	Back Taxes/Bank - M087/DMV CIVLS: 139809-6366474-Y	831.63	0.00	0.00
<b># Of Acct (s) : 50</b>			<b>36,377.60</b>	<b>-13,765.43</b>	<b>-13,765.43</b>
			<b>36,377.60</b>	<b>0.00</b>	<b>36,377.60</b>

**GENERAL DATA REAL ESTATE NORMALK TAX COLLECTOR**

**AS OF 01/06/2026**



BILL NO: 2023-01-0119321  
 UNIT/QUE ID: 3-17-40-A

ORIGINAL OWNER: NORMALK CENTER LLC  
 C/O:

LINK# 3-17-40-A  
 FILE#  
 BANK:  
 ESCROW:  
 VOL/PAGE: 6059-243  
 LIEN VOL/PAGE:  
 DISTRICT: 3 -

ADDRESS: ONE INTERNATIONAL PLACE STE 18  
 ADDRESS2:  
 CITY ST ZIP: BOSTON MA 02110  
 COUNTRY:  
 PROP LOC.:  
 EXR PROP LOC: A

M/B/L: 3 17 40 A

PLAN CODE: S2  
 PROP ASSESSED: 20,434,570  
 EXEMPTIONS:  
 COC CHANGE: -5,384,570  
 NET VALUE: 15,050,000  
 MILL RATE: 23.5445

DESCRIPTION:  
 ELD CODE:  
 EXMPT CHANGE: -2,043,427

**\*\*\* BILLED \*\*\***

	TOWN	SEWER	TOTALS
INST1	216,505.14	296.00	216,801.14
INST2	216,505.14	296.00	216,801.14
INST3	0.00	0.00	0.00
INST4	0.00	0.00	0.00
ADJS	-78,665.54	0.00	-78,665.54
TOT TAX	354,344.74	592.00	354,936.74
TOTAL PAID:	433,010.28	592.00	433,602.28

**\*\*\* PAYMENTS \*\*\***

TYPE	CYCLE	DATE	ADJ	TERM/BATCH/SEQ	INST	AMOUNT	INTEREST	LIENS	FEES	TOTALS
Adj	6	12/09/2025	00	2257750R	T	-78,665.54	0.00	0.00	0.00	0.00
Pmt	5	11/07/2024		99/9999/1	T	216,801.14	0.00	0.00	0.00	216,801.14
Pmt	2	08/14/2024		20/534/118	T	216,801.14	6,504.03	0.00	0.00	223,305.17

TOTAL PAYMENTS

TOTAL BALANCE DUE AS OF 01/06/2026

	TOWN	SEWER	TOTAL
INT DUE	0.00	0.00	0.00
LIEN DUE	0.00	0.00	0.00
FEES DUE	0.00	0.00	0.00
TAX DUE NOW	-78,665.54	0.00	-78,665.54
TOT DUE NOW	-78,665.54	0.00	-78,665.54
BALANCE DUE	-78,665.54	0.00	-78,665.54

**\*\*\* FLAGS \*\*\***

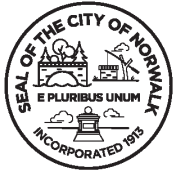
Circuit Breaker Amount 0  
 Invalid Address Flag No  
 Last Adjustment Reason COURT STIP 2023 GL

Benefit Year

0

TOTALS 440,106.31

FINANCE AND CLAIMS COMMITTEE UPDATE \$25,000 and Greater and Under \$100,000						
REPORTING PERIOD	PURCHASING SOLICITATION # / NONCOMPETITIVE PROCUREMENT FORM #/PO #	SOLICITATION OPENING DATE / NONCOMPETITIVE PROCUREMENT FORM DATE	DEPARTMENT	VENDOR	DESCRIPTION / SOLICITATION TITLE	AMOUNT
C4Q2025	4475	12/3/2025	Building Management	NV5 Consultants, Inc.	Engineering Design Services for Electrical and AC Upgrades at Wolfpit Elementary School	\$32,500.00
C4Q2025	4476	12/18/2025	R&P	Shock Electrical	Calf Pasture Light Pole Replacement Project	\$77,700.00
C4Q2025	2601909	10/8/2025	IT	GovConnection	OMNIA Partners/Region 4 ESC Contract #R210402 Mimecast renewal	\$55,696.12
C4Q2025	2602118	11/19/2025	BOE-IT	Whalley Computers	CT DAS 23PSX0163-computers	\$24,187.00
C4Q2025	2602154	11/21/2025	IT	Total Communications Inc	NASPO PA Contract # 23PSX0163AE-8-Pure Storage Expansion	\$85,482.14
C4Q2025	BOE IT-10282025-4-Touch Tech Pro-Interactive Display Panels-FC / 2602016	10/28/2025	BOE-IT	Touch Tech Pro	PEPPM 535122-193-Interactive display boards	\$82,037.00
C4Q2025	BOE IT-11032025-4-Vivacity Tech PBC-Crome Books-FC/2602045	11/3/2025	BOE-IT	Vivacity Tech PBC	PEPPM Synnex 530205-001 120 Chromebooks Teachers @ WRMS & PRMS	\$67,991.00
C4Q2025	R&P-11102025-6-Kimley-Horn-CAPRA-FC	11/10/2025	R&P	Kimley Horn	CAPRA Certification	\$75,000.00
C4Q2025	R&P-12172025-4-Gengras-Recreation Center Vehicles-FC	12/17/2025	R&P	Gengras Ford LLC	State Contract 24PSX0110-Recreation Center Vehicles	\$56,162.60
C4Q2025	R&P-12192025-4-Gengras-ADA Transport-FC	12/19/2025	R&P	Gengras Ford LLC	State Contract 24PSX0110-Recreation Center Vehicles	\$79,072.30
C4Q2025	TMP-11052025-6-Fuss and O'Neill Soundview-FC	11/5/2025	TMP	Fuss & O'Neil	Construction Admin Svcs-Soundview Ave	\$40,000.00
<b>TOTAL</b>						<b>\$675,828.16</b>



# Transportation Mobility & Parking

CITY OF NORWALK  
Transportation Mobility & Parking  
P: 203-854-7335  
Norwalk City Hall  
125 East Avenue, PO Box 5125  
Norwalk, CT 06856-5125

To: Finance and Claims Committee of the Norwalk City Council

From: Benjamin Yeung, P.E. – Senior Traffic Engineer, Transportation, Mobility, and Parking (TMP)

CC: Chitsamay Lam – Comptroller  
Jared Schmitt – Chief Financial Officer  
Tom Ellis – Director of Management and Budgets  
James Travers – Director, TMP  
Garrett Bolella – Assistant Director, TMP

**Subject: January 2026 Agenda - Authorize the Appropriation of \$500,000 from the Municipal Grant in Aid (Fund 58) for the fiscal year ending June 30, 2026, for the Design and/or Construction of the Roundabout at the Intersection of South Main Street, Meadow Street, Wilson Avenue, & Meadow Street Extension.**

**Date: January 15, 2026**

## **Background and Project Description**

The South Norwalk Elementary School (the “School”, which is planned for renaming in 2026 for Ruby Shaw, pending City Council approval) at 1 Meadow Street Extension recently opened in the Fall of 2025, warmly welcoming hundreds of students and parents. The School is immediately adjacent to the intersection of South Main Street, Meadow Street (Rt. 136), Wilson Avenue (Rt. 136), and Meadow Street Extension (the “Intersection”). The Traffic Impact Assessment prepared for the School prior to opening estimated that 55% of vehicular traffic to and from the School would pass through the Intersection.

Currently, the Intersection is configured as two very closely-spaced, skewed, T-intersections (**Figure 1**). The unusual configuration leads to inefficiencies in traffic flow, and poor sightlines at the Intersection lead to traffic safety issues. The hazards are exacerbated by a relatively high percentage of heavy vehicles (~15%). Crash data from January 2015 to December 2023, revealed that this Intersection is in the top ten percent most dangerous intersections by crash rate citywide, with several crashes involving vulnerable roadway users prior to 2020. Since the opening of the adjacent School, peak hour vehicle and pedestrian volumes are expected to have increased at the Intersection, which in turn raises the risk exposure for this location.

The non-standard configuration of the Intersection is related to an unused rail spur and associated wing wall structure in the northwest quadrant of the Intersection (**Figure 2**). The City of Norwalk recently acquired this vacant, abandoned rail spur property by eminent domain, with the transfer completed in December 2024. This allows us to align South Main Street, to the north, with Wilson Avenue to the south, such that a modern roundabout at the Intersection can be constructed (**Figure 3**). These needed roadway improvements will simplify turning movements, improve sightlines, and make it easier for drivers to anticipate the movements of other drivers and of vulnerable roadway users such as pedestrians and bicyclists.

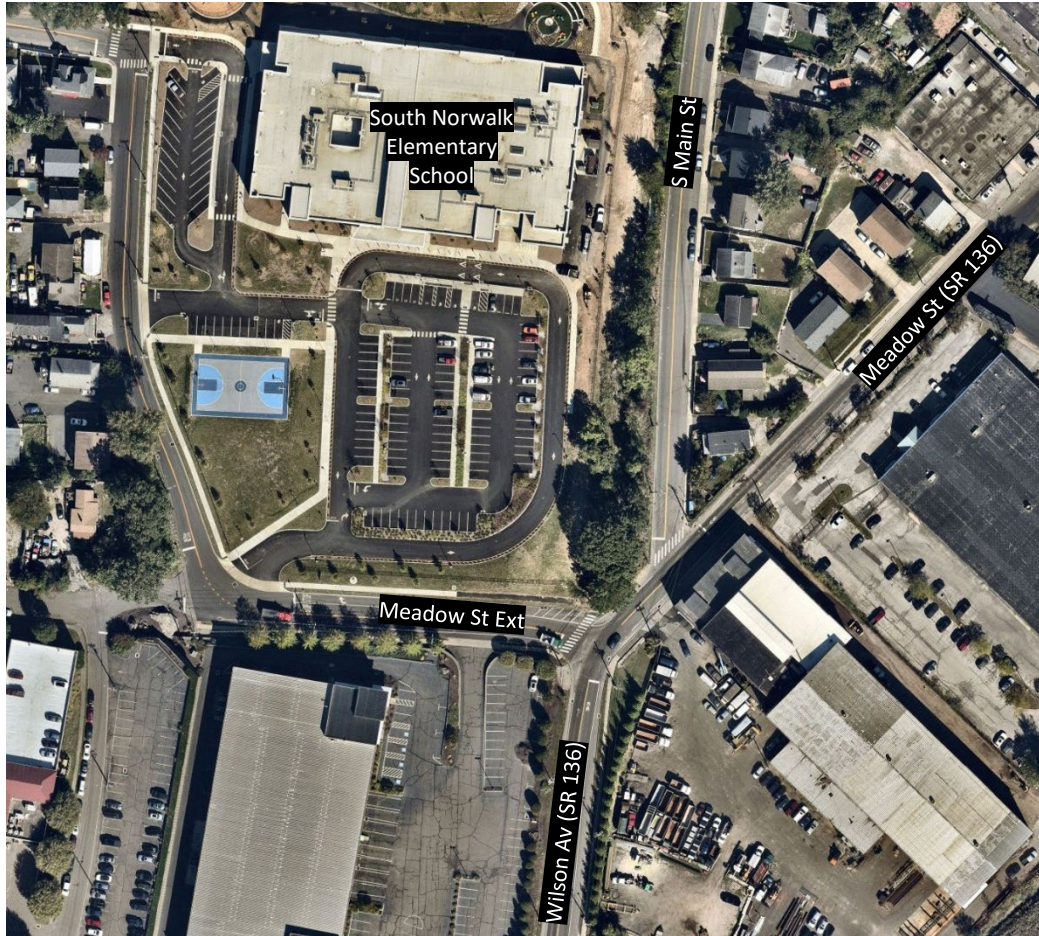


Figure 1. Aerial View of the Intersection of South Main Street, Meadow Street, Wilson Avenue, and Meadow Street Extension



Figure 2. Overhead Photo showing wingwall for former rail spur, at the Intersection of South Main Street, Meadow Street, Wilson Avenue, and Meadow Street Extension



Figure 3. Proposed Roundabout Concept Plan – Aerial Image Background

Traffic analysis and engineering judgment show that these improvements will allow the Intersection to better accommodate future traffic demand and mitigate or eliminate existing safety issues. Crucially, the redesign will give pedestrians a safer, more comfortable walking experience by providing landscaped amenity zones between the sidewalk and the curb on all approaches to the Intersection, and it will provide marked pedestrian crosswalks across each leg of the roundabout. The redesign will also provide an opportunity to accommodate supplemental student pick-up and drop-off on South Main Street. The proposed roundabout will allow these vehicles to return northbound on South Main Street, mitigating cut through traffic in the local neighborhoods.

The authorization for which action is requested here is only for **Phase 1 Construction** of the roundabout project, which is intended to advance preliminary site work, including the removal of the existing railroad embankment, in the Spring of 2026. This work would be completed ahead of Phase 2, which consists of construction on the roundabout itself. The design of the roundabout is planned to be finalized by Spring 2026 and Phase 2 construction would start in the Summer of 2026 to minimize traffic impacts during the school year.

### **Funding and Schedule**

In September 2023, the City's Common Council approved a special capital appropriation of \$1 million for the City's Transportation, Mobility, and Parking (TMP) Department for roadway improvements at this Intersection, a portion of which is used/encumbered for design and engineering services. Another \$1 million was appropriated to the City's Department of Public Works (DPW) to address flooding issues at the Intersection. In the Fall of 2024, the City of Norwalk was awarded \$2.5 million in construction funding for this project through the Community Investment Fund 2030 (CIF), which is a State program for fostering economic development in historically underserved communities throughout Connecticut.

Finally, in December 2025, \$10 million in State appropriations through FY26 Municipal Grants-in-Aid funding was awarded to the City of Norwalk. The authorization for which action is requested here is for \$500,000 of that total amount to be allocated to this project.

The new funding source is critical for obtaining approval to proceed with Phase 1 Construction of the roundabout project, which is intended to advance preliminary site work, including the removal of the existing railroad embankment, in the Spring of 2026. A contract with A. Vitti Excavators, LLC for \$849,497.00 is to be reviewed this month by the Economic and Community Development Committee of the Norwalk City Council, and TMP would tentatively seek approval from the full Council in the same meeting as this project, on January 27<sup>th</sup>, 2026. This Phase 1 work (Project TMP 2025-6) is to be funded through a combination of the remainder of TMP's \$1 million City capital appropriation, as well as a portion of the requested \$500,000 Municipal Grant-in-Aid funding.

The Phase 1 work needs to be completed ahead of Phase 2, which consists of construction on the roundabout itself. The design of the roundabout is planned to be finalized by Spring 2026 and Phase 2 construction would start in the Summer of 2026 to minimize traffic impacts during the school year. Any unused amount of the \$500,000 Municipal Grant-in-Aid funding would likely be applied toward the cost of Phase 2 construction.

### **REQUESTED ACTION:**

**Authorize the Appropriation of \$500,000 from the Municipal Grant in Aid (Fund 58) for the fiscal year ending June 30, 2026, for the Design and/or Construction of the Roundabout at the Intersection of South Main Street, Meadow Street, Wilson Avenue, & Meadow Street Extension.**

Sincerely,



Benjamin Yeung, P.E. – Senior Traffic Engineer, TMP



DEPT OF FINANCE - Purchasing Department

**NONCOMPETITIVE PROCUREMENT JUSTIFICATION FORM**

DATE: 12/19/2025

DEPARTMENT: Information Technology

Procurement by non-competitive proposals may be used only when the award of a contract is infeasible under informal competitive Quotations (§3-204), Informal Competitive Request for Proposals (§3-205), seal bids, or competitive proposals and at least one of the following circumstances applies:

**Check One:**

<input type="checkbox"/>	1	The item is available only from a single source (justification is attached). The provisions of this regulation apply to all sole source procurements unless emergency conditions exist as defined by Purchasing Guideline on Emergency Procurements
<input type="checkbox"/>	2	After solicitation of several sources, competition is determined inadequate (record of source contacts and/or attempts to obtain pricing is attached)
<input type="checkbox"/>	3	The compatibility of equipment, accessories, or replacement parts is of paramount consideration
<input checked="" type="checkbox"/>	4	The item/service is available on a Cooperative Purchasing Agreement (please provide the organization name, quote, and the contract/agreement number)
<input type="checkbox"/>	5	The public exigency or emergency for the requirement will not permit a delay resulting from competitive solicitation (documented emergency contingency is attached). <b>Please forward this form and supporting documentation within 48 hours of the Emergency</b>
<input type="checkbox"/>	6	Other, please explain:

TOTAL COST: \$112,733.13 MUNIS Account: 011370-574C

VENDOR: GovConnection, Inc.

Purchasing Agent Signature		The Purchasing Agent		Department Head Signature	
Sharon Connors	Digitally signed by Sharon Connors	<input checked="" type="checkbox"/>	Supports	Joyce Liu	Digitally signed by Joyce Liu
	Purchasing Agent Name	<input type="checkbox"/>	Does Not Support		Department Head Name
	Date: 2025.12.22 15:26:33 -05'00'	<input type="checkbox"/>	Single Source Requires Common Council Authorization (in excess of \$20,000.00)?		Date: 2025.12.22 15:02:34 -05'00'

**JUSTIFICATION:**

Microsoft Office 365 licenses are required for City employees to perform essential daily functions, including email, document creation, collaboration, and secure access to City systems. Microsoft is the sole provider of Office 365 licensing. GovConnection, Inc. is an approved government reseller and offers competitive pricing through the NCPA cooperative contract.

This purchase is a renewal of existing licenses and is necessary to prevent service interruption and ensure continued City operations.

**ANY OTHER VENDORS CONTACTED FOR PRICING? (Please attach quotes):** \_\_\_\_\_

**Vendor 1:** \_\_\_\_\_

**Vendor 2:** \_\_\_\_\_

---

**EMERGENCY:** Explain in detail the nature of the emergency

# SALES QUOTE

GovConnection, Inc.  
732 Milford Road  
Merrimack, NH 03054

**Account Executive:** Anthony Forno  
**Phone:** (800) 800-0019 ext. 75004  
**Fax:** 603-683-0827  
**Email:** anthony.forno@connection.com

**# 25838745.02**  
PLEASE REFER TO THE ABOVE  
QUOTE # WHEN ORDERING  
**Date:** 12/31/2025  
**Valid Through:** 1/30/2026  
**Account #:** S01766

**Customer Contact:** AnnMarie Silva  
**Email:** asilva@norwalkct.gov  
**Phone:** (203) 854-7337  
**Fax:** (203) 857-0143

<b>QUOTE PROVIDED TO:</b> AB#: 12884 <b>CITY OF NORWALK</b> ACCOUNTS PAYABLE/CITY HAL PO BOX 5125 125 EAST AVE, RM 233 NORWALK, CT 06854 US (203) 854-7712	<b>SHIP TO:</b> AB#: 14774888 <b>CITY OF NORWALK CONNECTICUT</b> AnneMArie Silva 125 EAST AVE STE 203 NORWALK, CT 06851 US (203) 854-7849
--	--

DELIVERY	FOB	SHIP VIA	PRODUCT WEIGHT	TERMS	CONTRACT ID#
5-30 Days A/R/O	Destination	Small Pkg Ground Service Level	.00 lbs	Net 30	R210402

Important Notice: --- THIS QUOTATION IS SUBJECT TO THE FOLLOWING Terms of Sale: All purchases from GovConnection, Inc. are subject to the Terms and Conditions of our OMNIA Partners/Region 4 ESC Contract # R210402. Any Order accepted by GovConnection for the items included in this Quotation is expressly limited to those Terms and Conditions; any other terms and conditions referenced or appearing in your Purchase Order are considered null and void. No other terms and conditions shall apply without the written consent of GovConnection, Inc. Please refer to our Quote Number in your order.

* Line #	Qty	Item #	Mfg. Part #	Description	Mfg.	Price	Ext
1				MPSA Agreement#: 4100086233 PurchAcct#(PAN): 0005529942 Usage Date: 3/1/2026 Order Type: Renewal Order			\$ -
2	1	41918027	AAA-12599	Govt. MPSA Visual Studio Professional Sub (MSDN) SA Only Level D 36 Mo Prorated Upfront Payment	Microsoft MPSA	\$ 960.16	\$ 960.16
3	660	35805677	AAA-11646	Govt. MPSA Office 365 Government G1 Per User Level D 12Mo Upfront Payment	Microsoft MPSA	\$ 107.66	\$ 71,055.60
4	150	35442837	AAA-11650	Govt. MPSA Office 365 Government G3 Per User Level D 12Mo Upfront Payment	Microsoft MPSA	\$ 247.61	\$ 37,141.50
5	4	35267426	AAA-11694	Govt. MPSA Visio Online Plan2G Per User Cloud Subscription Level D 12mo Upfront Payment	Microsoft MPSA	\$ 161.49	\$ 645.96
6	1	41197259	AAA-22537	Govt. MPSA Project Plan 3 GCC per User Subscription Level D 12Mo Upfront Payment	Microsoft MPSA	\$ 322.96	\$ 322.96
7	10	41483861	AAA-28265	Govt. MPSA Audio Conferencing G Add-on Subscription Level D 12Mo Upfront Payment	Microsoft MPSA	\$ 31.54	\$ 315.40
8	6	38112180	AAA-34567	Govt. MPSA Power BI GCC Pro per User Subscription Level D 12Mo Upfront Payment	Microsoft MPSA	\$ 118.29	\$ 709.74
9	3	35737441	AAA-43195	Govt. MPSA Office 365 Government G5 Per User Level D Upfront Payment 12 Months	Microsoft MPSA	\$ 415.81	\$ 1,247.43
10	2	41412062	AAF-28786	Govt. MPSA Power Automate Per User w / Attended RPA Subs GCC Per User Level D 12Mo Upfront Payment	Microsoft MPSA	\$ 167.19	\$ 334.38
<b>Subtotal</b>						\$	<b>112,733.13</b>
<b>Fee</b>						\$	<b>0.00</b>

# SALES QUOTE

GovConnection, Inc.  
732 Milford Road  
Merrimack, NH 03054

**Account Executive:** Anthony Forno  
**Phone:** (800) 800-0019 ext. 75004  
**Fax:** 603-683-0827  
**Email:** anthony.forno@connection.com

**# 25838745.02**  
*PLEASE REFER TO THE ABOVE QUOTE # WHEN ORDERING*  
**Date:** 12/31/2025  
**Valid Through:** 1/30/2026  
**Account #:** S01766

**Customer Contact:** AnnMarie Silva  
**Email:** asilva@norwalkct.gov

**Phone:** (203) 854-7337  
**Fax:** (203) 857-0143

<b>QUOTE PROVIDED TO:</b> AB#: 12884 <b>CITY OF NORWALK</b> ACCOUNTS PAYABLE/CITY HAL PO BOX 5125 125 EAST AVE, RM 233 NORWALK, CT 06854 US (203) 854-7712	<b>SHIP TO:</b> AB#: 14774888 <b>CITY OF NORWALK CONNECTICUT</b> AnneMArie Silva 125 EAST AVE STE 203 NORWALK, CT 06851 US (203) 854-7849
--	--

DELIVERY	FOB	SHIP VIA	PRODUCT WEIGHT	TERMS	CONTRACT ID#
5-30 Days A/R/O	Destination	Small Pkg Ground Service Level	.00 lbs	Net 30	R210402

Important Notice: --- THIS QUOTATION IS SUBJECT TO THE FOLLOWING Terms of Sale: All purchases from GovConnection, Inc. are subject to the Terms and Conditions of our OMNIA Partners/Region 4 ESC Contract # R210402. Any Order accepted by GovConnection for the items included in this Quotation is expressly limited to those Terms and Conditions; any other terms and conditions referenced or appearing in your Purchase Order are considered null and void. No other terms and conditions shall apply without the written consent of GovConnection, Inc. Please refer to our Quote Number in your order.

* Line #	Qty	Item #	Mfg. Part #	Description	Mfg.	Price	Ext
						Shipping and Handling	\$ 0.00
						Tax	Exempt!
						<b>Total</b>	<b>\$ 112,733.13</b>



**ORDERING INFORMATION**

**GovConnection, Inc. DBA Connection-Public Sector Solutions  
OMNIA Partners/Region 4 ESC Contract #R210402  
Contract Expiration: 31 May 2026**

**Please contact your account manager with any questions.**

<b>Ordering Address</b>	<b>Remittance Address</b>
GovConnection, Inc. 732 Milford Road Merrimack, NH 03054	GovConnection, Inc. Box 536477 Pittsburgh, PA 15253-5906

**Please reference the Contract # on all purchase orders.**

**TERMS & CONDITIONS**

Payment Terms:	NET 30 (subject to approved credit)
FOB Point:	DESTINATION (within Continental US)
Maximum Order Limitation:	NONE
FEIN:	52-1837891
DUNS Number:	80-967-8782
Cage Code:	OGTJ3
Business Size:	LARGE

WARRANTY: Manufacturer's Standard Commercial Warranty

NOTE: It is the end user's responsibility to review, understand and agree to the terms of any End User License Agreement (EULA).

*Important Notice: --- THIS QUOTATION IS SUBJECT TO THE FOLLOWING Terms of Sale: All purchases from GovConnection, Inc. are subject to the Terms and Conditions of our OMNIA Partners/Region 4 ESC Contract #R210402. Any Order accepted by GovConnection for the items included in this Quotation is expressly limited to those Terms and Conditions; any other terms and conditions referenced or appearing in your Purchase Order are considered null and void. No other terms and conditions shall apply without the written consent of GovConnection, Inc. Please refer to our Quote Number in your order.*

If you require a hard copy invoice for your credit card order, please visit the link below and click on the Proof of Purchase/Invoice link on the left side of the page to print one:

<https://www.govconnection.com/web/Shopping/ProofOfPurchase.htm>

<b>Please forward your Contract or Purchase Order to:</b> <a href="mailto:SLEDOPS@connection.com">SLEDOPS@connection.com</a>
<b>QUESTIONS: Call 800-800-0019</b>
<b>FAX: 603.683.0374</b>



CITY OF NORWALK  
**Joyce Liu**  
**Director/Information Technology**  
125 East Avenue Room 203  
Norwalk, CT 06851  
Office: (203) 854-7714  
[www.norwalkct.gov](http://www.norwalkct.gov)  
[jliu@norwalkct.gov](mailto:jliu@norwalkct.gov)

TO: Finance & Claim Committee  
FROM: Joyce Liu, Director of Information Technology  
RE: Proposal for Purchase of Office 365 Licenses for City of Norwalk Employees  
DATE: January 8th, 2026

\*\*\*\*\*

Dear Members of the Finance Committee,

I am writing to request approval to renew and purchase Microsoft Office 365 licenses for City of Norwalk employees. These licenses are a core component of our daily operations and are required for staff to perform essential functions such as email, document creation, collaboration, and secure access to City systems.

Due to the number of employees supported, the total cost of the Office 365 licenses exceeds \$100,000. Microsoft is the sole provider of Office 365 licensing, and GovConnection has provided the most competitive pricing through the NCPA cooperative contract (Contract ID NCPA 01-144).

The City's current Office 365 licenses are scheduled to expire on February 29, 2026. These licenses have been renewed annually to ensure continuity of operations and to avoid service disruptions that would significantly impact City departments and staff.

Given the mission-critical nature of these tools and the upcoming expiration date, timely approval is necessary to maintain uninterrupted access to essential software across the organization.

Please let me know if you need any additional information or documentation to support this request. Thank you for your consideration and continued support.

Sincerely,

IT Director

**ACTION REQUESTED:**

Authorize the purchasing agent to issue a purchase order to GovConnection, Inc, in an amount not to exceed \$112,733.13 for Microsoft Office 365 Licenses Renewal. Account Allocation: 011370-574C

## Summary of Personal Property Proposal

Dear Finance and Claims Members,

An RFP was issued to solicit proposals for the performance of personal property audits on behalf of the City Of Norwalk. The audits are performed to confirm proper filing of personal property declarations by the businesses operating in Norwalk. The audits are intended to confirm that businesses are declaring all their property and reflecting the value of that property accurately.

We received 3 bids from qualified companies. A panel of 3 people reviewed the proposals and chose a vendor based upon a number of criteria including experience, ability to perform and pricing. Based upon all the parameters considered the selection committee chose to present the proposal of Charles B Feldman & Associates LLC.

Mr. Feldman's firm has provided these audit services to the city over the past several years and the results have been very favorable. We look forward to continuing this relationship for the five year period described in the proposal.

The breakdown per yr is;

Yr 1       Aproximately 50 audits at \$650 per audit for \$32,500 total cost

Yrs 2 - 3   Aproximately 40 audits per year at \$700 per audit for \$28,000 total cost per year

Yrs 4 – 5   Aproximately 40 audits per year at \$750 per audit for \$30,000 total cost per year

These figures could vary slightly per year as we may need to do more or less audits as we review the current landscape as defined by the current businesses present.

- a.           Authorize the Mayor, Barbara C. Smyth, to execute a five (5) year agreement with Charles B. Feldman & Associates, LLC for project 4477 Personal Property Audits for a total not to exceed \$165,000 for the 5 year period.

Funding Available from Account # 11320-5253

Thank you for your attention and approval.

Respectfully submitted

Paul J Gorman

City Assessor Norwalk